

# ACO Solutions for Hotels and Resorts

*Helping create signature hotels worldwide*



Follow us on Facebook



Follow us on YouTube







# *Helping create signature hotels worldwide*

Our system solutions function in both directions: protecting people from water – and vice versa. Our products are frequently found in, on and around many stunningly beautiful and spectacular buildings worldwide. Planners and architects know they can rely on ACO's competence in situations where not only design quality but also extreme ruggedness, functionality and safety are a top priority.

In this book you will find application solutions for different areas in your project, meeting the major challenges of the design, professional expertise and inspiration projects from around the world. In addition, our dedicated team and technical services are available to help you create your signature hotel.

*Explore inspirational project solutions around the world!*





*ACO has years of international experience providing system solutions for hotels. Our extensive portfolio of products and services for the following applications:*

- ✓ **Roof, Terrace & Facade**
- ✓ **Kitchen**
- ✓ **Bathroom**
- ✓ **Entrance & Lobby**
- ✓ **Spa & Pool**
- ✓ **Basement**
- ✓ **Parking**
- ✓ **Garden & Landscaping**

**8** applications for hotels





## Content

<b>ACO Group</b>	7		
<b>Roof, Terrace &amp; Facade</b>	9	<b>Basement</b>	79
Line drainage	15	Lightshafts	85
Gravity and syphonic gullies	17	Windows	87
ACO GM-X pipe system	19	Therm block	89
		Backflow preventers	91
<b>Kitchen</b>	21		
Hygienic box channels	27	<b>Parking</b>	93
Hygienic gullies	29	Line drainage with design gratings	99
Pipes	31	Kerbs with integrated drainage	101
Wall protection	33	High capacity slot drainage system	103
Grease separators	35	Monolithic slot channels	105
Wastewater lifting plants	37	Line drainage for parking decks	107
		Surface water treatment for light liquids	109
<b>Bathroom</b>	39		
Shower line drainage	45	<b>Garden &amp; Landscaping</b>	111
Shower point drainage	51	Ground stabilisation systems	117
Supplementary components	53	Modular infiltration system	121
		Tree protection	123
<b>Entrance &amp; lobby</b>	55	Access covers	125
Entrance matting systems	61	Manhole covers	127
Access covers	63	Point drainage	129
<b>Spa &amp; Pool</b>	65	<b>ACO reference projects</b>	131
Channels with gratings	71		
Slot channels	73		
Custom made line drainage	75		
Floor gullies	77		





**ACO Academy – sharing knowledge equals multiplying know-how**

ACO's strength: we consider communication to be a crucial success parameter. With intense knowledge management, we harness the opportunities for linking up creativity, know-how and experience world-wide, and share this expertise with clients and partners.



Iver Ahlmann and Hans-Julius Ahlmann, managing partners of the ACO group



The historic building on the banks of the Eider river, the symbolic headquarters of the ACO Group



ACO is the organizer of one of the largest exhibitions of modern art in Europe NordArt [www.nordart.de](http://www.nordart.de)



Our local teams are always available to support your project during the design, execution and operation stage.



**ACO. creating the future of drainage**

**ACO is the world leader in drainage technology**

We see our market through the eyes of our customer. We like to keep in close contact with them to impress them with the best products and services.

**ACO creates solutions for tomorrow environmental conditions**

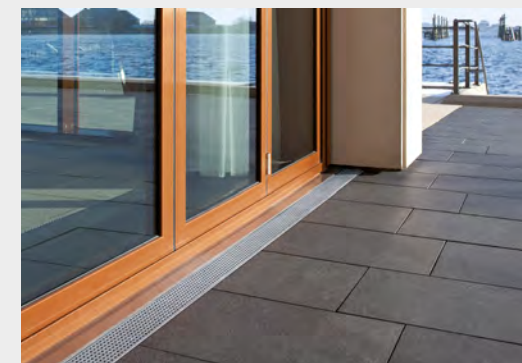
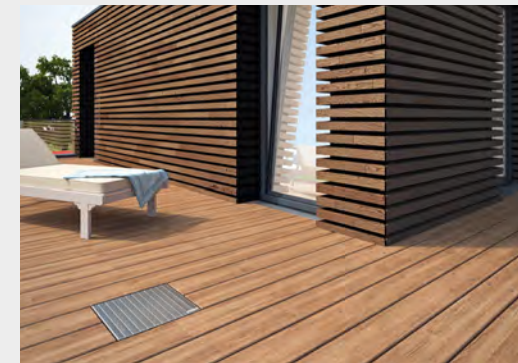
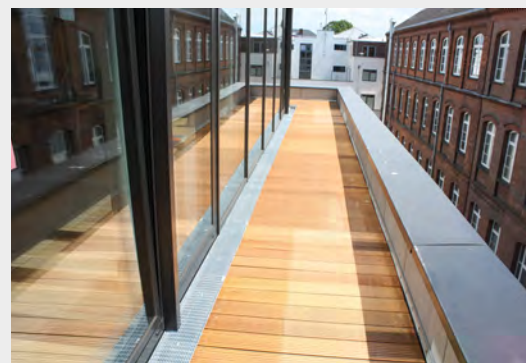
Global climate change is causing more and more frequent extreme weather events such as droughts and heavy rainfall. We develop innovative system solutions to weather these events.

**ACO creates passion for top performance**

We support those who act courageously. We enjoy working together creatively across all cultural barriers. In our philosophy, setbacks are an opportunity to become even better.



# Roof, Terrace & Facade





# Roof, Terrace & Facade

Roofs encompass the upper building boundary and their design is an important part of the overall structure of the building. Planning errors in roof drainage can lead to, in extreme cases, the collapse of the roof. This can be dangerous and lead to the destruction of the entire property or lowering of its value. There are many aspects to consider when designing the roof drainage system. It's important to take into account the local climate as well as the norms, regulations, architectural and construction requirements.



## Heavy rainfall

Flat roofs are sensitive architectural areas. Therefore a professional planning of the drainage system is particularly important. If rain falls on the flat surface, large amounts of water can quickly accumulate. To protect the building, a drainage system is required. Heavy and continuous rainfall must be considered to ensure the structure of the roof.



## Barrier free movement

Modern public buildings must provide barrier free movement and accessibility to all internal and external areas of the building. In order to accomodate the high standards of architects and planners, drainage of facades and terraces should be perfectly integrated with the surrounding surface. Consequently, the height of the channels must be adjusted with mm-accuracy to the floor level. They should also prevent any water accumulation or splashing during heavy rainfall.



## Fire Protection

All countries set general requirement about fire safety and protection. Therefore roof installation must be set up, modified and maintained in such a way that public safety and order are not jeopardized. Roof constructions must be arranged, erected, modified and maintained in such a way as to prevent the occurrence of a fire and the spread of fire and smoke.

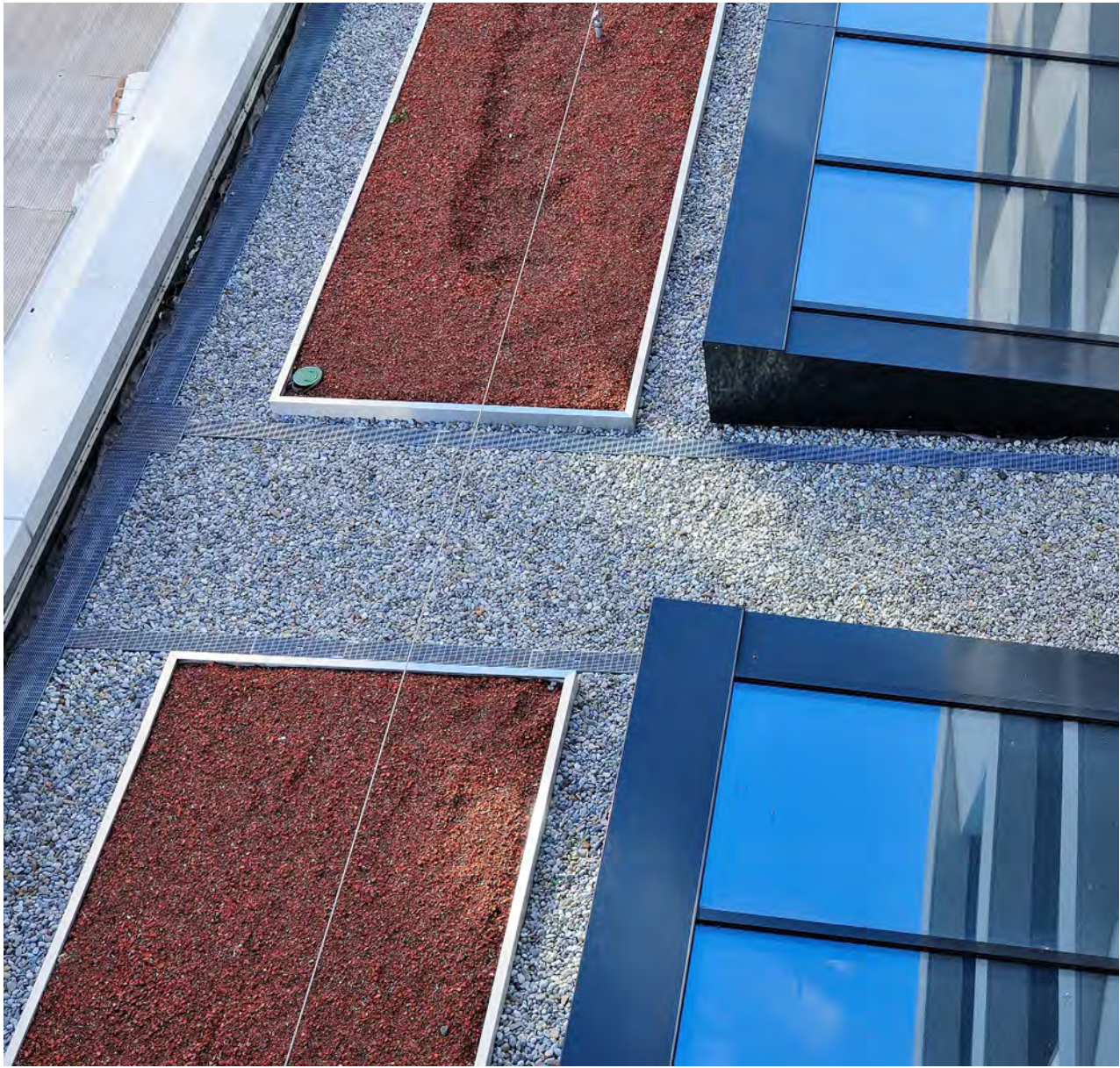


## European norms and regulations

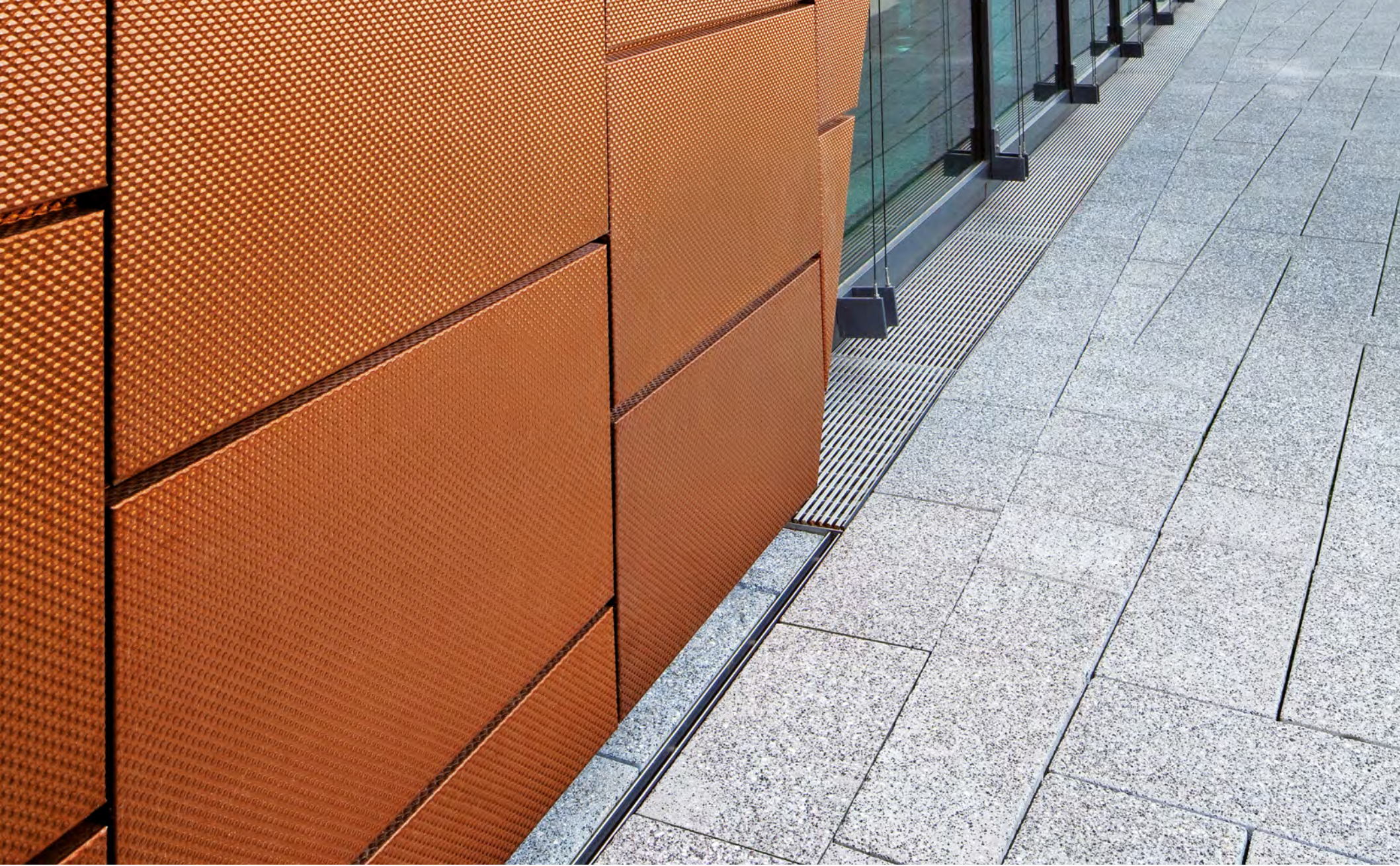
- **EN 1253** - Roof gullies for buildings.
- **EN 12056-3:2000** - Gravity drainage systems inside buildings. Roof drainage, layout and calculation
- **EN 13501** - Fire classification of construction products and building elements. Classification using test data from reaction to fire tests







*Barrier free surface and optimal protection for the building boundaries*



Flat roofs have many advantages, but they have to master a huge static challenge. When it comes to planning and execution, safety, fire protection and effective roof drainage are top priorities. ACO offers functional solutions that are specially adapted to the flat roof area of use and ensure optimum drainage of rainwater. For smaller areas, systems for gravity drainage are suitable. On large roofs over 150 m<sup>2</sup> per gully, drainage systems with negative pressure are preferred. ACO offers products in the materials cast iron and stainless steel-A1 class fire protection materials. There are also special solutions for green roof, attic and emergency drainage. When planning the correct flat roof drainage and the hydraulic calculation of the pressure flow systems, ACO supports you with the latest standard-compliant design software and a high level of practical knowledge. The planning and execution of façade drainage, balcony drainage or terrace drainage in residential construction demands the highest degree of individual adaptation and design from architects

and engineers. The areas must be sustainably protected from the weather influences, including rainwater, wind, snow piling and heat protection. In addition to that ACO has developed a comprehensive range of solutions in compliance to functional and design requirements, including contemporary trends for barrier free surfaces and secondary drainage. Our professional services and flexible production process enable the creation of individual solution to face any project challenges.

#### ACO Fire protection

According to the European regulations for fire protection for flat drain roof flat roof gullies with fire protection insert are needed to prevent the transfer of smoke and fire in the building area. In case of fire the special developed material in the function device of the Jet gully blocks the opening in the roof gully to prevent the breakdown of fire and smoke.



## ACO System solutions for roof, terrace & facade



**ACO Profiline**



**ACO Jet**



**ACO Spin**



**ACO GM-X**





Roof Terrace & Facade  
Kitchen  
Bathroom  
Entrance & Lobby  
Spa & Pool  
Basement  
Parking  
Garden&Landscaping

# ACO Profile

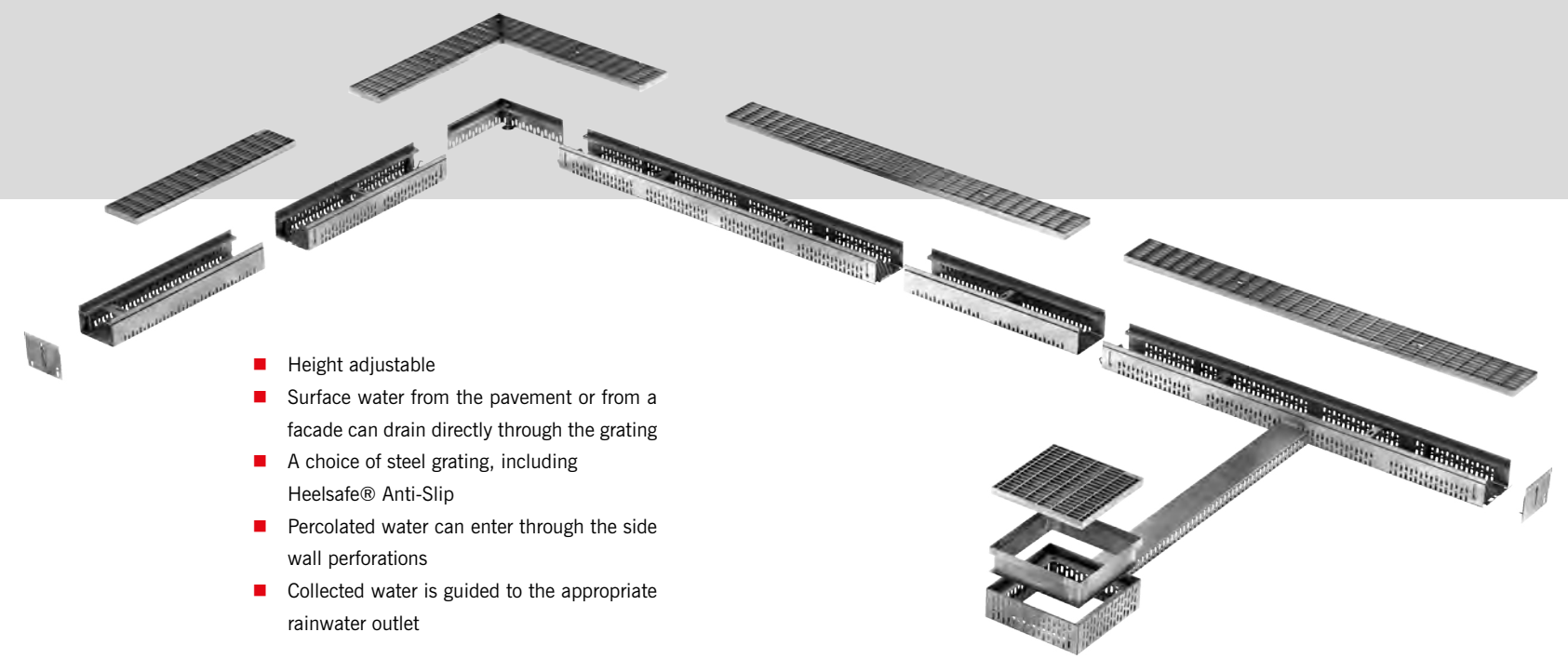
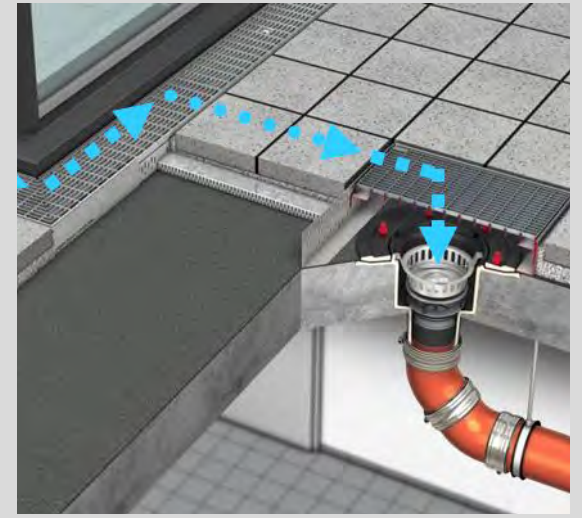
## Line drainage

### Product overview

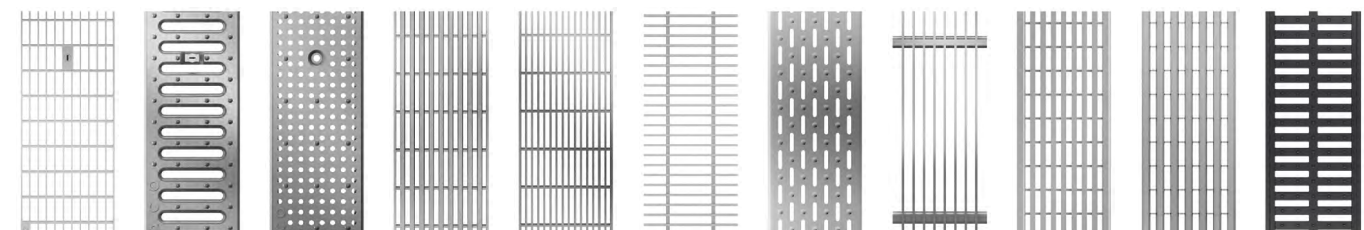
The Profile system is designed to be positioned above the roof or balcony membrane. It drains water directly from the pavement surface or down a façade via the grate. Perforations in the side walls of the channel allow water that has percolated through the pavement or green roof materials, to drain. It then guides this water to the roof or balcony drain.

If the roof or balcony drain cannot be ideally situated, drainage ducts can be used to discretely direct the water to the required location.

The access grate can be used over the rainwater outlet to provide access for maintenance.



- Height adjustable
- Surface water from the pavement or from a facade can drain directly through the grating
- A choice of steel grating, including Heelsafe® Anti-Slip
- Percolated water can enter through the side wall perforations
- Collected water is guided to the appropriate rainwater outlet





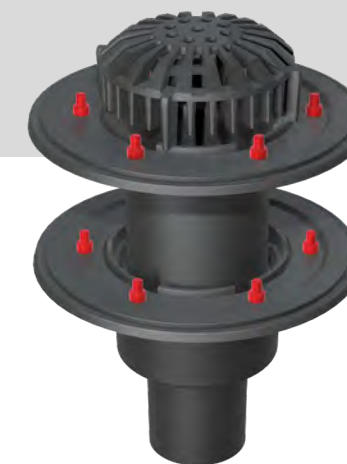


## ACO Jet & ACO Spin

### Siphonic & Gravity roof drainage

#### Product overview

Flat roofs are sensitive architectural areas. That is why it is especially critical to plan their drainage systems professionally. When rain falls onto a flat roof, large volumes of water can collect rapidly. Unless there is an effective way of draining off precipitation, this can lead to excess loads being placed on the building's structure. ACO offers functional solutions which are specially designed for flat roof areas and which ensure the water is drained effectively. For smaller surfaces, gravity drainage systems are the solution. For larger roofs of 150 m<sup>2</sup> per gully or more, siphonic systems can be installed.



#### ACO gravity roof drainage - Spin

- Material - cast iron and stainless steel
- One-piece or two-piece gullies
- Suitable for main and emergency drainage
- Individual components of the gullies such as gratings, top sections and gully bodies
- With or without insulation
- Vertical angled outlets: 90° / horizontal angled outlets 1,5°
- Various accessories
- Non-flammable A1, according EN 1253-2



#### ACO siphonic roof drainage- Jet

- Material - cast iron and stainless steel
- One-piece or two-piece gullies
- Increased drainage performance level
- Specially designed flat roof drains, configured to work with completely full pipes (degree of fill h/d 1.0).
- Special components used to prevent vortices forming.
- Vertical angled outlets: 90°
- Non-flammable A1, according EN 1253-2





Roof Terrace & Facade  
 Kitchen  
 Bathroom  
 Entrance & Lobby  
 Spa & Pool  
 Basement  
 Parking  
 Garden&Landscaping

## ACO GM-X

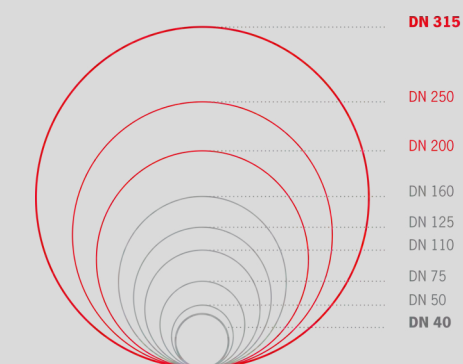
Galvanized steel pipe system

### Product overview

ACO GM-X pipes made of galvanized steel are successfully used in the field of flat roof drainage in the Nominal size of DN 32 - DN 300. The extensive range of pipes and fittings allows a fast and economical solution for each installation situation. Due to the proofed socket connection, a quick and easy plug-in installation by turning the pipe and fittings can be executed in the sleeve. The production of the ACO GM-X pipe system complies to all requirements of EN 1123.



### Wide range of nominal sizes



- Breakage protected
- Dimensionally stable
- Heat resistant up to 95 ° C
- Non- flammable (A1)
- Frostproof
- Outer sleeve provides enhanced functional security
- Additional internal sound protection coating
- Protection against condensation water prevents the formation of mould



# Kitchen





# Kitchen

Commercial kitchens are extremely busy environments with potentially wet and greasy floors due to the abundance of liquids used in both the cooking and cleaning processes, and of course, liquids are often very hot! Waste water can also contain fat which could cause a major problem of pipe blockages and cannot be released to the waste water system. In combination, these factors may affect Food Safety, Operational cost and Health & Safety.

Hygiene**First**

## Food safety

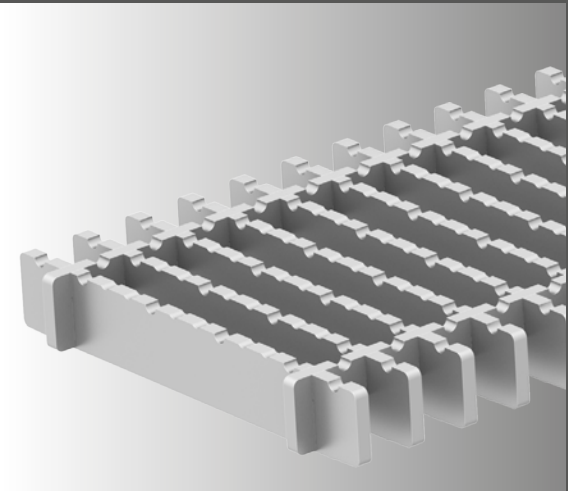
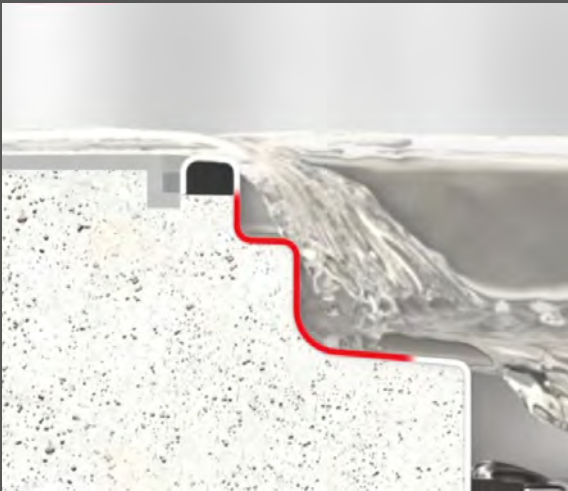
Food safety can be severely affected due to poor drainage and grease separation systems. ACO solutions are designed to effectively and safely drain away and handle process water. We design our products specifically to reduce the risk of food contamination.

## Cost control

Management of costs is a major factor in business today. Commercial kitchen equipment including drainage and grease separation systems should fulfil its function with low operational cost in mind throughout its entire lifespan. ACO drainage and grease separation systems are designed so they can be easily maintained, reducing associated cleaning costs and maximising hygienic performance.

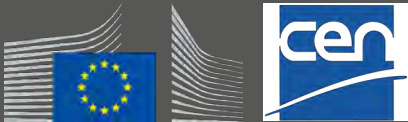
## Health & safety

Minimizing the risk of injury in the workplace is of prime importance to any commercial kitchen facility. It's essential that your facility has a drainage system which improves health and safety conditions during cleaning, emptying and operation, while ensuring hygiene is always front of mind.



## European norms and regulations

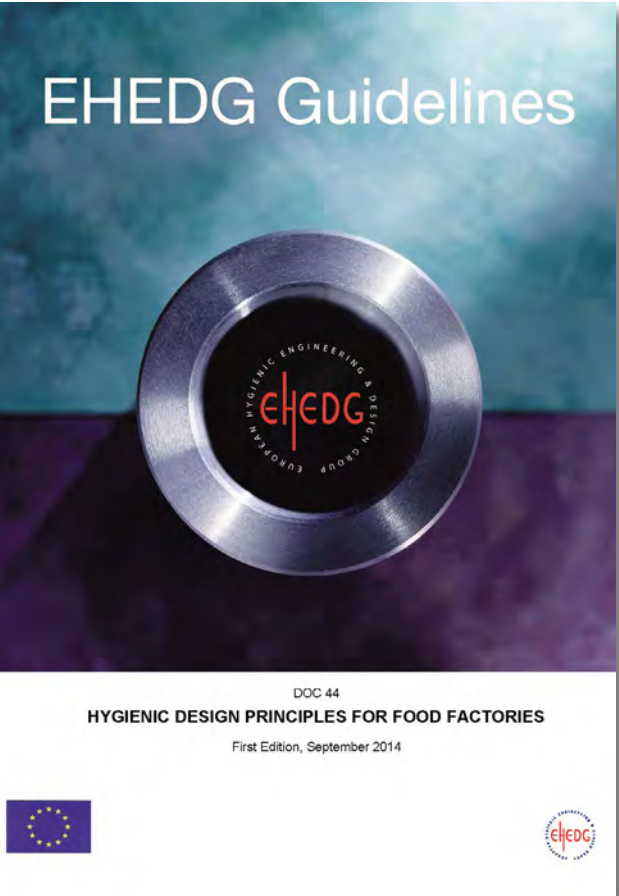
- **EN 1672** Food processing machinery-hygiene requirements
- **EN ISO 14159** Safety of machinery - Hygiene requirements for the design of machinery
- **EN 1253** Gullies for buildings. Gullies with light liquids closure







*Innovative products and expert collaborations*



ACO works closely with leading industry suppliers and institutions to raise drainage performance standards. We also connect with, listen to and understand people that matter – be chefs, hygiene officers, engineers, kitchen planners, cleaning providers, contractors, researchers or business owners. Our collaboration with experts helps us to understand the risks of poorly designed drainage, raise standards of product performance and enable specifications that empower the designer and end user to achieve the best possible outcome. In addition to providing high performance drainage products, we also offer a comprehensive range of services to support you through the life of your project and, via our in-house technical design team, can develop engineered solutions which are tailored to meet specific requirements. With its advanced drainage solutions for commercial kitchens and the food industry

ACO cares about hygiene and food safety. That's why ACO is a long term member of the European Hygienic Engineering and Design Group, EHEDG. Both, ACO and EHEDG, have recently decided to extend their cooperation for the year 2015. ACO and flooring specialist Sika commissioned a three year study and research program to provide factory and processing operators with clear evidence-based guidance with regard to flooring-drainage connections. The results of the research led to the development of a customised L-profile edge solution. It is resistant to both thermal and dynamic shocks and is being incorporated into our product design.



## ACO System solutions for kitchen



**Hygienic Drainage**



**Pipes**



**Wall protection**



**Grease Separators**



**Wastewater Lifting Plants**





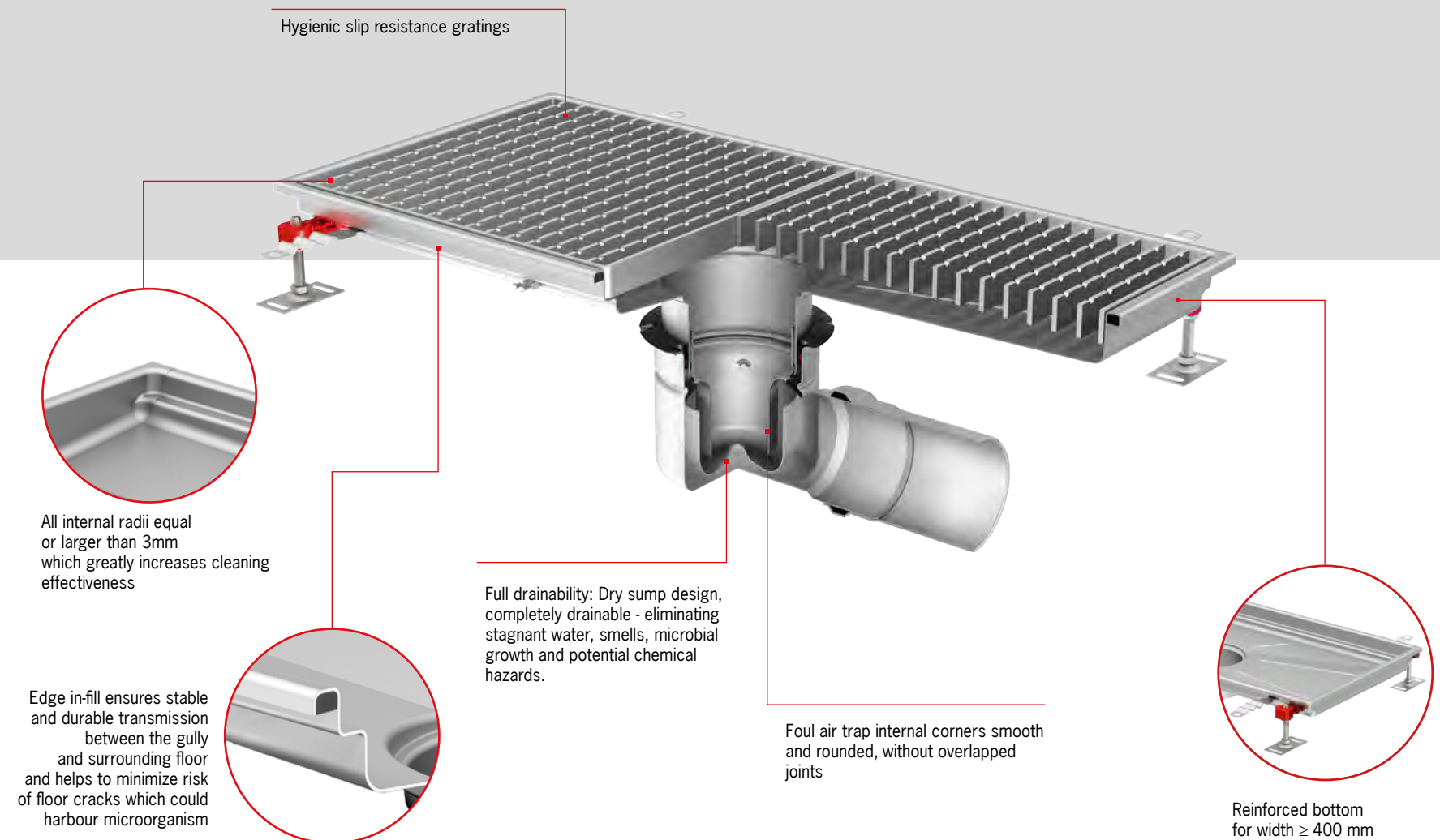
Roof Terrace & Facade  
Kitchen  
Bathroom  
Entrance & Lobby  
Spa & Pool  
Basement  
Parking  
Garden&Landscaping

## ACO Hygienic Box Channel

### Product overview

The ACO hygienic box channel range incorporates hygienic principles to ensure the optimum hygienic performance. The hygienic box channel range is ideal for applications where high standards of hygiene are required as they are capable of handling large volumes of fluid. ACO hygienic box channels are certified according to EN 1253.

- Hygienic design following EN 1672, EN ISO 14159 and EHEDG document 8, 13 and 44
- V-shape bottom for width up to 300 mm, reinforced bottom for width above and including 400 mm
- Adjustable EasyFix levelling feet
- Fully pickled and passivated
- Wide range of gratings for load classes L15, M125 and R 50





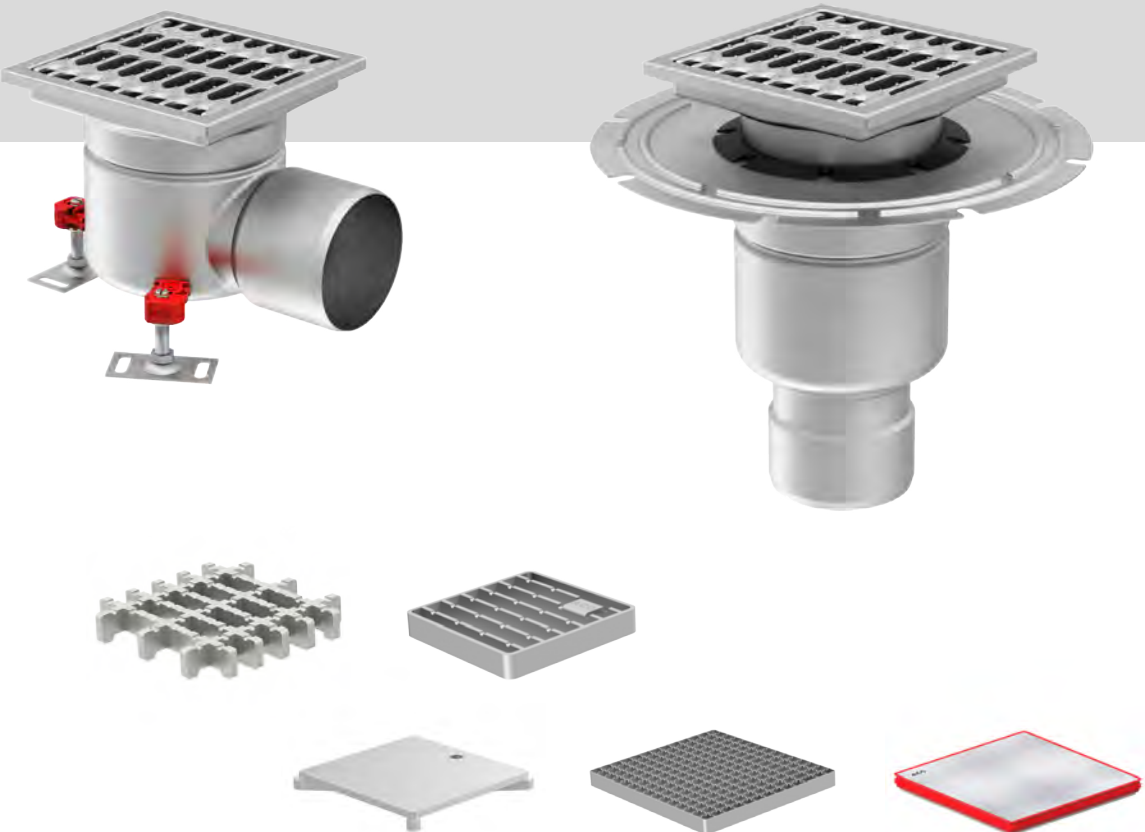


# ACO Hygienic Gully

## Product overview

The ACO hygienic gully range incorporates the hygienic design principles to ensure the best hygienic performance. Available in three body sizes, this range caters for various flow rates and construction requirements including shallow construction depths. Fire protective solution is also available for applications where preventative measures are required. ACO hygienic gully is tested and certified according to EN 1253-1 and EN 14159-1.

- Full drainability
- Internal radii equal or larger than 3 mm
- Hygienic joints
- Edge infill
- Stainless steel grade min. 1.4301 according to EN 10088 (304 according to AISI)
- Fully pickled and passivated



## Gratings for ACO hygienic gully

A variety of grating types is available depending on application and requested load class. For applications with high hygienic demands ladder grating frameless or slot cover should be selected.

- Hygienic design following EN 1672, EN ISO 14159 and EHEDG document No. 8, 13 and 44
- Available in 1.4301 (304) or 1.4404 (316L) grades of stainless steel
- Fully pickled and passivated
- Certified according to EN 1253-1
- Range of gratings suitable to load class L 15, R 50, M 125 or N 250 (EN 1253-1)
- Slip resistant solution available





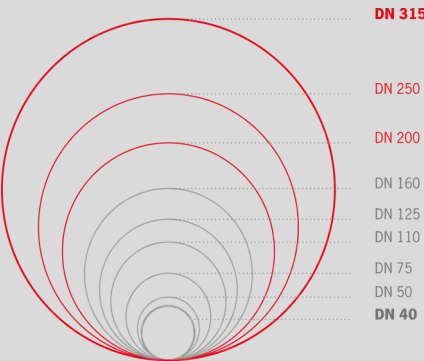
# ACO Pipe

Stainless steel pipe system

## Product overview

The stainless steel push-fit pipe system is designed for grey or black water. ACO pipe offers 40+ years product life thanks to its material properties. Easy installation and handling on site is ensured by push-fit assembly system and available cutting tools. ACO pipe is more hygienic, robust and durable when compared to plastic.

## Wide range of nominal sizes



- Roof Terrace & Facade
- Kitchen
- Bathroom
- Entrance & Lobby
- Spa & Pool
- Basement
- Parking
- Garden&Landscaping

## Six advantages of ACO pipe

1

Resistant to thermal expansion

2

Sagging proof

3

Class A1 fire resistant

4

Rodent proof

5

Durable

6

Lightweight







Roof Terrace & Facade  
Kitchen  
Bathroom  
Entrance & Lobby  
Spa & Pool  
Basement  
Parking  
Garden&Landscaping

## ACO Kerb

Hygienic wall protection

### Product overview

ACO kerb is a reliable wall protection system that prevents walls from impacts (200 mm height up to 1 ton, 300 mm height up to 5 tons as recommended by EHEDG), water or chemical ingress, or other damages associated with traffic and production process. It is suitable for any food processing area.

- Protects walls from impacts caused by machinery or other transport systems
- Eliminates water ingress into the wall and leakage into other processing areas
- Curved design prevents accumulation of soils and allows easy cleaning



### ACO kerb PB



### ACO kerb PB-plain



### ACO kerb S/S - single side



### ACO kerb S/S - double side







# ACO Lipurat/ Hydrojet

## Grease separators

### Product overview

ACO Grease separators according to European Standard (EN) 1825 rely on the relative density naturally present in the influent. FOGs, whilst wide ranging in relative density, are always less dense than water and naturally float on the surface of the water within the separator unit. Similarly, solid particulates common to most cooking processes are denser than water and sink to the separator base.



### ACO Lipurat-OAE (stainless steel)

- Grease separator plant as per DIN EN 1825 and DIN 4040-100
- For indoors installation – frost free
- With integrated sludge trap
- Draining connection, fire hose quick coupling B 2½"
- Suction and emptying sump with drain plug socket 1½"
- Automatic high-pressure internal cleaning with pump
- Nominal pressure: 175 bar
- Capacity: 13 l/min
- Chopping, mixing, rinsing in one process
- Disposal pump with free flow impeller
- Motor power: 3.0 kW/2850 rpm



### ACO Hydrojet-Jet-OSE (PE-HD)

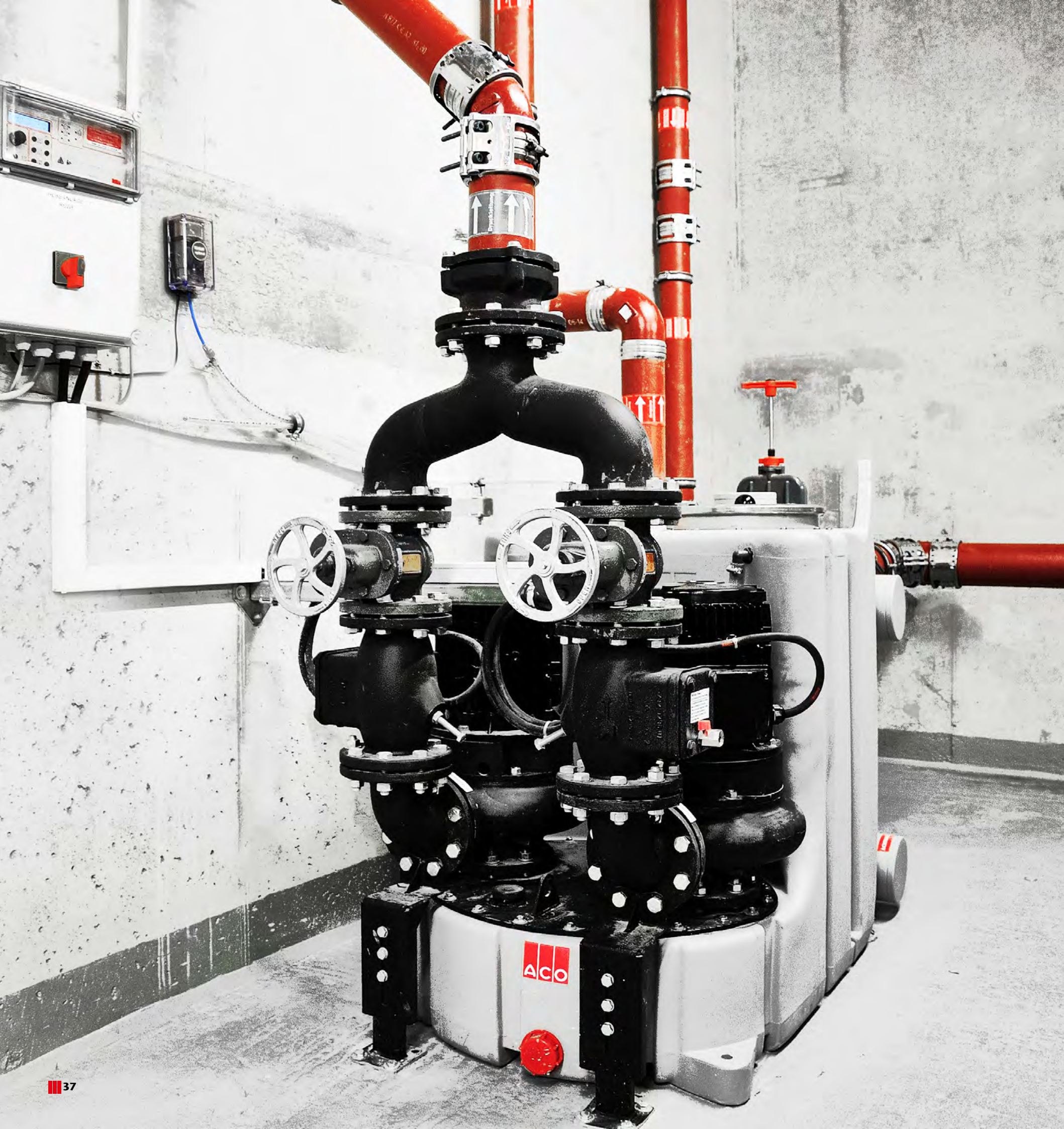
- Grease separator plant as per DIN EN 1825 and DIN 4040-100
- For indoors installation – frost free
- With integrated sludge trap
- Operating side: right/left
- Draining connection, fire hose quick coupling B 2½"
- Suction and emptying sump with drain plug socket 1"
- Manual operation of the high pressure internal cleaning with pump
- Nominal pressure: 175 bar
- Capacity: 13 l/min]
- Disposal pump with free flow impeller
- Motor power: 3.0 kW/2850 rpm



### ACO Grease trap AGT-40

- Designed for below-sink use in commercial kitchens and other foodservice establishments
- Prevents grease and food debris from entering waste water
- Protects waste water from grease and food debris
- Biological activators degrade and consume the FOG aiding the prevention of blockages in the wastewater system





Roof Terrace & Facade  
Kitchen  
Bathroom  
Entrance & Lobby  
Spa & Pool  
Basement  
Parking  
Garden&Landscaping

# ACO Muli

## Wastewater lifting plants

### Product overview

Apart from the installation site and delivery head, the quality of the wastewater is another important aspect for choosing the right lifting plant. Wastewater from washing machines or washbasins, so-called grey water (non-faecal wastewater), does not contain any bulky solids. It can therefore be transported more easily than black water. Lifting plants for black waste water are designed to easily transport solids with-out blocking.



### ACO Muli-Star DDP wastewater lifting plant for faecal wastewater – for freestanding installation

- Low weight
- Different inlet heights
- CFD-optimised impeller
- Ready to connect
- High usable volume – up to 185 l
- Adapted to door dimension: 780 mm

Suitable for:

- Grey and black water
- Use downstream of grease separators up to NS 15



### ACO Muli Pro-PE K duo wastewater lifting plant for faecal wastewater – for freestanding installation

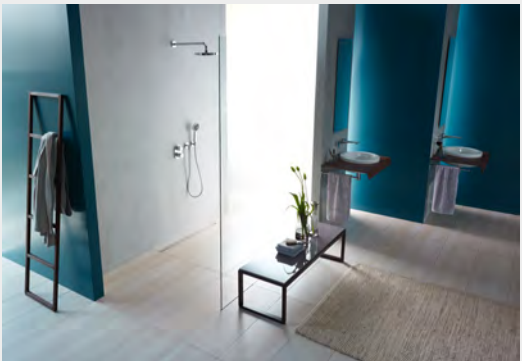
- Different inlet heights
- High operational safety due to pneumatic pipe andair bubble injection
- Energy saving channel impeller pump
- Adapted to door dimension: 780 mm
- Wastewater lifting plants

Suitable for:

- Grey and black water
- Use downstream of grease separators up to NS 20



# Bathroom





# Bathroom

Designing a high quality bathroom involves a combination of aesthetic and functional challenges. The bathroom area is the place in the hotel where the requirements for comfort, safety and design are crucial for the overall wellbeing experience. The trends in modern bathroom interiors are providing space and freedom of movement. Architects need flexible solutions that provide uncompromising quality, safety and freedom of design.



## Barrier-free design

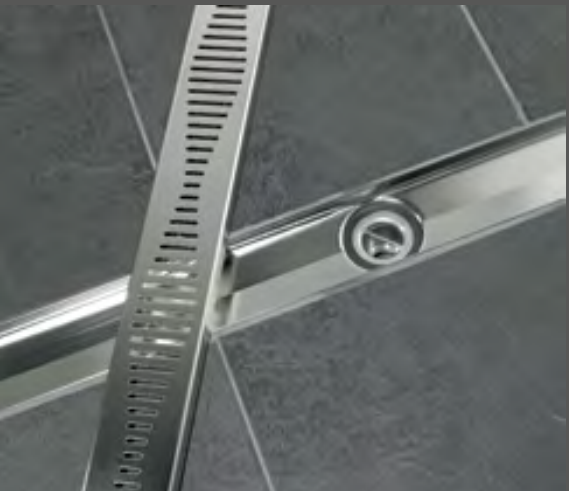
The idea of the floor-level bathroom design is inspired by generous space trends by reducing materials and transitions into renouncing all optical and factual barriers. It is also required in any public spaces where freedom of movement and free access for people with disabilities, elders or young children must be supported.

## Quality

High quality of materials in bathroom designs is essential not only for the durability of the interior, but also for creating harmony between the different surfaces and ensuring safety and easy maintenance of the area. Special focus must be placed on reliable connection between all elements of the surface to ensure complete water tightness and prevention of damage to the structure or hygiene risks.

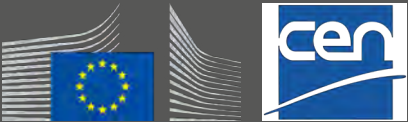
## Care

Easy and effective maintenance is essential both for the guest experience and operational costs. This is especially important in bathroom areas. Round shapes and flat surfaces without disturbing components provide for both a harmonious design as well as for easy cleaning. In addition, all surfaces need to be particularly resistant to detergents.



## European norms and regulations

■ EN 1253 - Gullies for buildings







*Design & function provided by state of the art production technology*



Many years of international experience in providing solutions for hotels, bathrooms and sanitary areas have given us deep knowledge and understanding of the essential requirements, needs and challenges that those projects meet. We support our partners and customers with high quality materials, perfect workmanship and outstanding design capabilities.

The comfort of a safe and easy installation is essential. Our one-piece solutions are ready to install completely watertight. Together with detailed illustrated manuals the installation is efficiently managed.

Some areas of application have special architectural specifications and therefore require customized solutions, measured precisely down to the millimeter. Our flexible production facilities provide endless possibilities for customized designs and individual solutions.

Our portfolio includes a wide choice of aesthetic stainless steel solutions to fit to every interior style. The electro-polished finishing supports design and easy cleaning due to ultra-smoothed surfaces.

ACO's premium products for hotel bathrooms guarantee maximum safety, load resistance and hygiene while meeting the highest design expectations.

As a future orientated company ACO is investing into environmentally friendly product solutions. Recuperation of energy is only one example towards sustainable buildings.



The heat exchanging drainage for shower areas offers a cost-saving and environmental solution.



**ACO System solutions for bathroom**



**ACO ShowerDrain E+**



**ACO ShowerDrain C**



**ACO ShowerDrain S**



**ACO Bath Gully MG**





Roof Terrace & Facade  
Kitchen  
Bathroom  
Entrance & Lobby  
Spa & Pool  
Basement  
Parking  
Garden&Landscaping

## ACO ShowerDrain E+

Stainless steel line drainage

### Product overview

ACO ShowerDrain offers the perfect way to create generously sized, uniform bathroom designs without any interruptions, changes in materials or barriers. Whether the design incorporates discreet lines, curved point drainage areas, designer gratings made from stainless steel or glass covers, a hotel logo or integrated LED modules – with this option, the possibilities are endless. What is more, ACO's premium products for hotel bathrooms guarantee maximum safety, load resistance and hygiene.

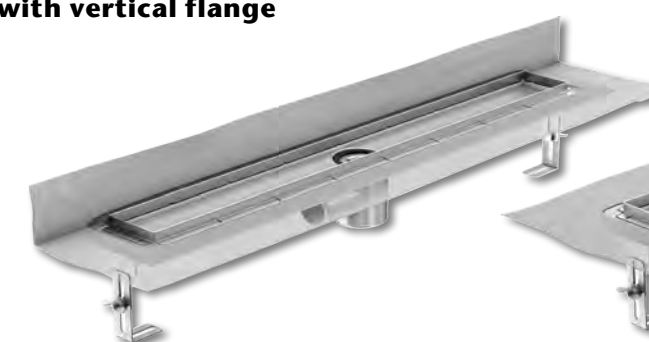


reddot design award

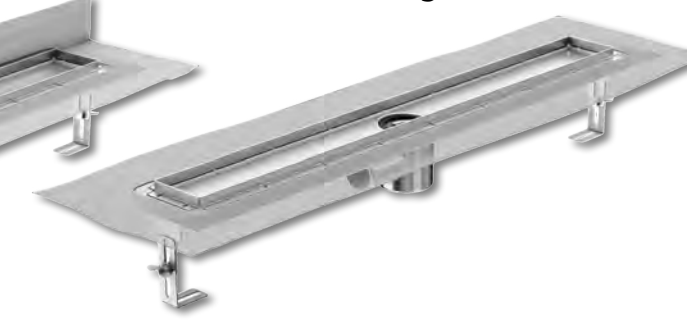


- Material: Stainless steel, material grade 304
- Load class: Meets K3 requirements
- Internal channel width: 80 mm
- Flow rate: 0.6 l/s (with 20 mm build-up as per EN 1253-1)
- Outlet socket: Suitable for all push-fit pipe socket systems
- Foul air trap: 2-part, removable
- Flange types: Surrounding wall flanges
- Channel: Electropolished surface
- Mounting: Ready for installation
- Sound protection: Sound protection accessories integrated as standard
- Total building height: 105 mm (with water trap 50 mm)

### ACO ShowerDrain E+ with vertical flange



### ACO ShowerDrain E+ without flange



### Accessories



Hair strainer

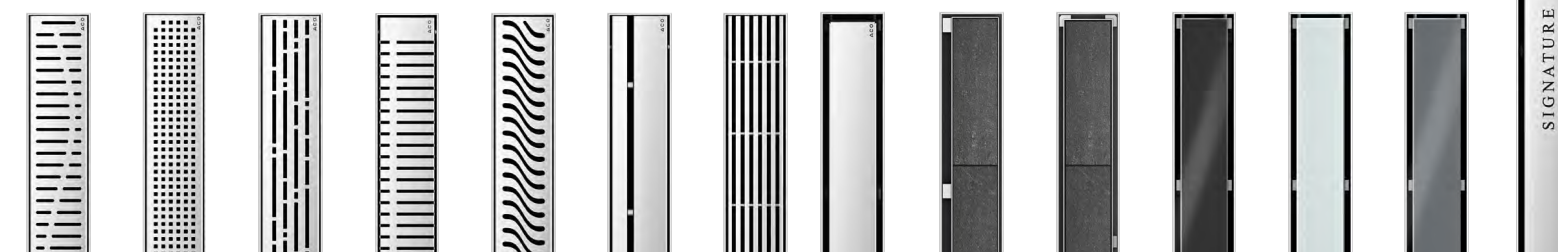
- For retrofitting and minimum reduction of the shower channel's flow value by 0.04 l/s



ACO EasyStop

- Prevents drying out of the water trap in the foul air trap
- Material: plastic with membrane insert and lip seal

Your individual hotel design/  
logo







Roof Terrace & Facade  
Kitchen  
Bathroom  
Entrance & Lobby  
Spa & Pool  
Basement  
Parking  
Garden&Landscaping

## ACO ShowerDrain C

Stainless steel line drainage

### Product overview

ACO ShowerDrain C offers a minimum building height of 65mm to unfinished floor level. Due to the removable foul air trap the full access to the pipeline is provided helping for the optimum cleaning of the channel. Furthermore the welded stainless steel body minimizes the risk of leakage and in the same time provides high flow rate of the system.



- Material: Stainless steel, material grade 304
- Load class: K3
- Internal channel width: 64 mm
- Flow rate: 0.9 l/s (with 20 mm build-up as per EN 1253-1)
- Outlet socket: Suitable for all push-fit pipe socket systems
- Flange design: Permanently cast-on, for optimum connection of a compound seal
- Type of flange: Surrounding
- Mounting: Ready for installation
- Channel body: Pickle passivated
- Gratings: Grinded
- Grating variants: Stainless steel designer gratings, tileable cover

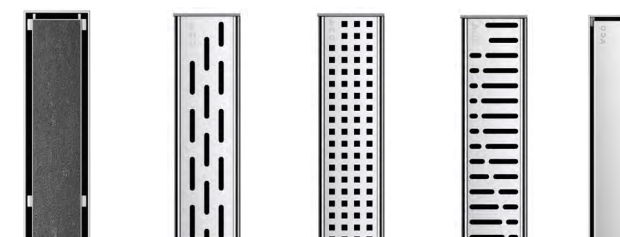
ACO ShowerDrain C  
with vertical flange



ACO ShowerDrain C  
with horizontal flange



ACO ShowerDrain C  
without flange







Roof Terrace & Facade  
Kitchen  
Bathroom  
Entrance & Lobby  
Spa & Pool  
Basement  
Parking  
Garden&Landscaping

## ACO ShowerDrain S

Stainless steel line drainage

### Product overview

ACO ShowerDrain S offers a minimum building height of just 55 mm to unfinished floor level and meets all sound protection requirements (SSt I-III in acc. with VDI 4100). The removable submersible pipe in the foul air trap and the e-polished surface ensures the optimum maintenance. With just 2 cm visible width ACO ShowerDrain S is a perfect choice for elegant and discreet look offering comfortable barrier-free movement around the shower area.



- Material: Stainless steel, material grade 304
- Load class: K3
- Internal channel width: 34 mm
- Flow rate:
  - 0.5 l/s without build-up (ND 50/ND 40)
  - 0.8 l/s with 20 mm build-up (ND 50 as per EN 1253-1)
  - 0.65 l/s with 20 mm build-up (ND 40 as per EN 1253-1)
  - 0.35 l/s without build-up (ND 32)
  - 0.55 l/s with 20 mm build-up (ND 32 as per EN 1253-1)
- Outlet socket: Suitable for all push-fit pipe socket systems
- Flange design: Permanently cast-on, coated at the factory, for optimum connection of a compound seal

**ACO Shower Drain S**  
**Gully ND 32**



**ACO Shower Drain S**  
**Gully ND 40**



**ACO Shower Drain S**  
**Gully ND 50**



### Accessories



Hair strainer

- Prevent pipes becoming obstructed with hair
- Simple removal and cleaning
- For retrofitting
- Minimal reduction in shower channel drainage of 0.04 l/s

Stripes



Plate







## ACO Bath gully

### Point drainage

#### Product overview

ACO Easyflow floor gullies range offers wide choice of solutions for bathroom drainage. The gullies can be used either as main drainage system or in combination with line drainage. The variety of design gratings offers stylish combinations with line drainage solutions, as well a completely discreet option with integrated tile in the fully frame.

The products are in full compliance with EN 1253-1 and all functional requirements. The installation is compatible with different floor structures and tile thickness. Easy maintenance is provided after full removal of the foul air trap.



#### ACO Easy flow

- Material: Plastic, Top section ABS Gully body PP
- Outlet socket: Suitable for all push-fit pipe socket systems
- Flow rates: 1.0 to 1.6 l/s
- Gully body flange type: Clamping flange
- Mounting: Ready for installation
- Grating variants:
  - Stainless steel (round or square)
  - Tileable, Glass
- Retrofittable upgrades:
  - Fire protection
  - Lighting option
  - Dry foul air trap



#### ACO Bath Gully MG

- Grating: 95 x 95/ 104 x140
- Water trap: 25 mm
- Inclination: 1,5°
- Installation height: 51 mm



\*Explore more grating desing on page 78



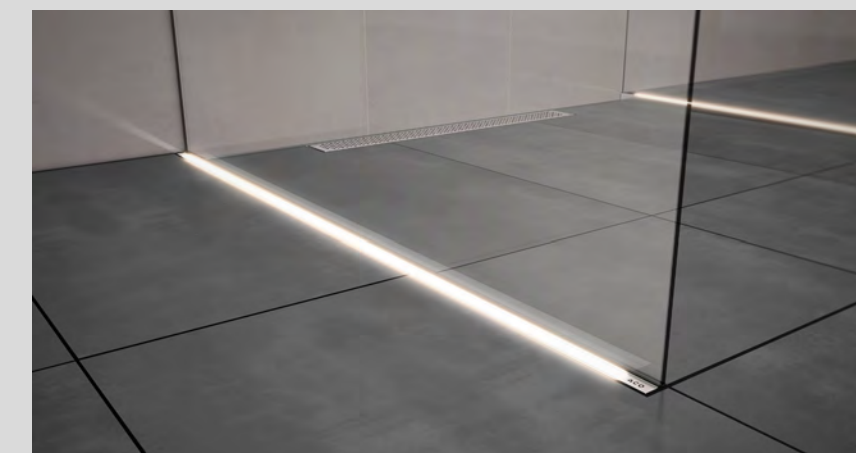


## ACO Supplementary components

### Product overview



**ACO ShowerStep**



**ACO Lightline Pro**



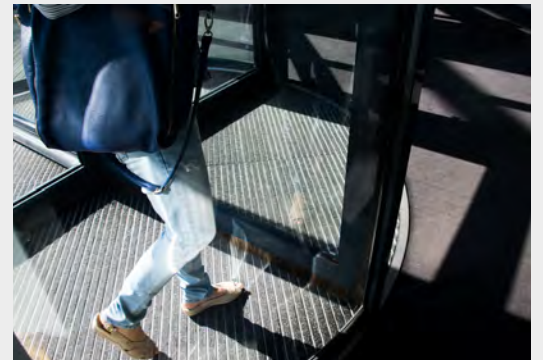
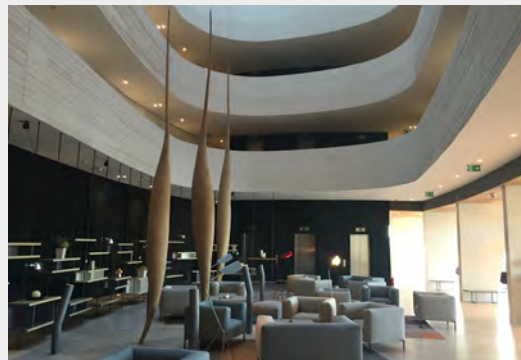
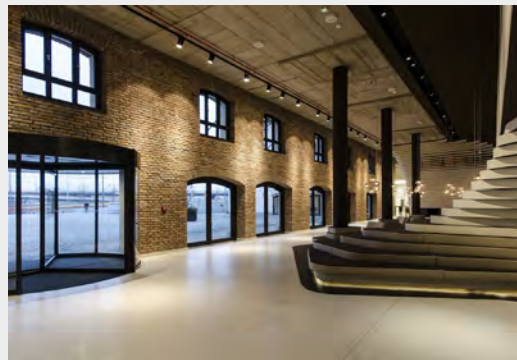
- Three heights (10, 12,5 and 15 mm) for different tile thicknesses
- Two lengths available
- Pre-formed gradients
- Easy to fit
- Material: Stainless steel, material grade 304
- Upper surface: 12 mm, for use with or without glass shower wall



- Prefabricated stainless steel profile with cast
- LED lighting
- Scatter coating to create the appearance of a light strip
- Suitable for barefoot and wet areas
- Protection class IP 68



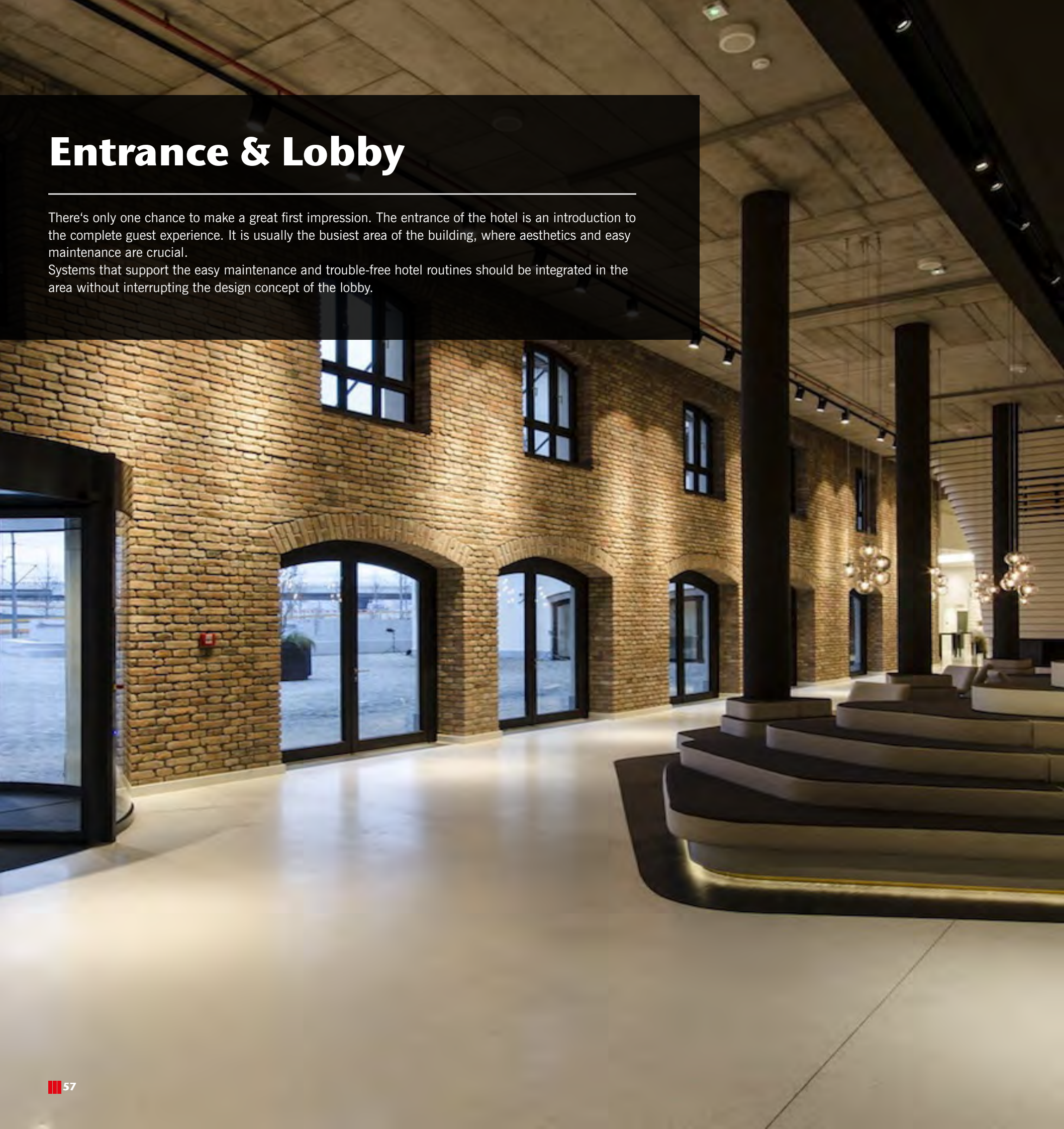
# Entrance & Lobby





# Entrance & Lobby

There's only one chance to make a great first impression. The entrance of the hotel is an introduction to the complete guest experience. It is usually the busiest area of the building, where aesthetics and easy maintenance are crucial. Systems that support the easy maintenance and trouble-free hotel routines should be integrated in the area without interrupting the design concept of the lobby.



## Aesthetics

Each detail in the lobby area can be the business card for the hotel. It may be a luxurious hotel with a spacious entrance or a cozy family hotel – it is this area that first welcomes the guests. Therefore the complete interior design with all integrated elements should be in harmony with the style and identity of the hotel. Special focus should be put on the surface to allow barrier-free and unobtrusive movement.



## Maintenance

Operational cost of the hotel can be significantly optimized if maintenance is taken into consideration during the design phase. The busy area at the hotel entrance requires easy and effective cleaning with correct design of designated areas that limit dirt and dust entering the building from the outside. Easy access to utility systems is needed without disturbing the visual appearance.



## Durability

Maintenance and renovation works affect the operations in the hotel and particularly the entrance is a sensitive spot that cannot be easily closed or exchanged. All systems and materials in the interior area have to provide long-lasting functionality and a visually pleasing appearance. Therefore, special attention needs to be paid to high-quality materials and careful selection of elements.



## European norms and regulations

- **EN1253** - Gullies for buildings.
- **EN1433** - Drainage channels for vehicular and pedestrian areas.







*Freedom of design and  
tailor made solutions*



■ Zone 1 -  
Coarse dirt



■ Zone 2 -  
Fine dirt and moisture



■ Zone 3 -  
Remaining fine dirt and  
moisture



Our years of working side-by-side with architects, investors and facility managers help us see the hotel project through their eyes and easily recognize the most important issues that need to be addressed during the planning phase. To meet the needs of each different project we provide freedom of design and delivery tailor made solutions that fit the specific requirements. In order to keep the interior floors and surfaces beautiful, clean and free of obstacles for free movement, the area needs to be carefully planned.

Designing designated areas to keep dirt from the outside and fine dust entering the inside of the building can optimize cleaning costs up to 90%. It is recommended to have 3 segments of the shoe scrapers – exterior part for bigger dirt particles, a segment within the spinning door and interior part for fine dust. The features of the doormat system are calculated by the expected number of people entering the building. Our offer includes a variety of professional shoe

scrapers that meet all requirements for design, traffic and load resistance, size and shape. The doormats are framed to the floor which prevents unnecessary movement and slipping and at the same time providing an even surface for smooth movements. In addition to that the high quality stainless steel profile of the shoe scraper can be personalized with the hotel brand or navigation text.

Complex communication and utility services within the hotel building often require access points for maintenance and revision to be placed in floor boxes or under the surface. As final component of those points the access cover can be easily integrated into the overall design concept of any sophisticated or individual building objects. Due to the selectable covering, installed in the lid of the cover – the solution is an ideal adaptation to the existing flooring available. Our range of access covers offers a wide choice of materials, solutions for different load classes and application requirements.



## ACO System solutions for Entrance & Lobby



ACO Mats



ACO Uniface cover





Roof Terrace & Facade  
Kitchen  
Bathroom  
Entrance & Lobby  
Spa & Pool  
Basement  
Parking  
Garden&Landscaping

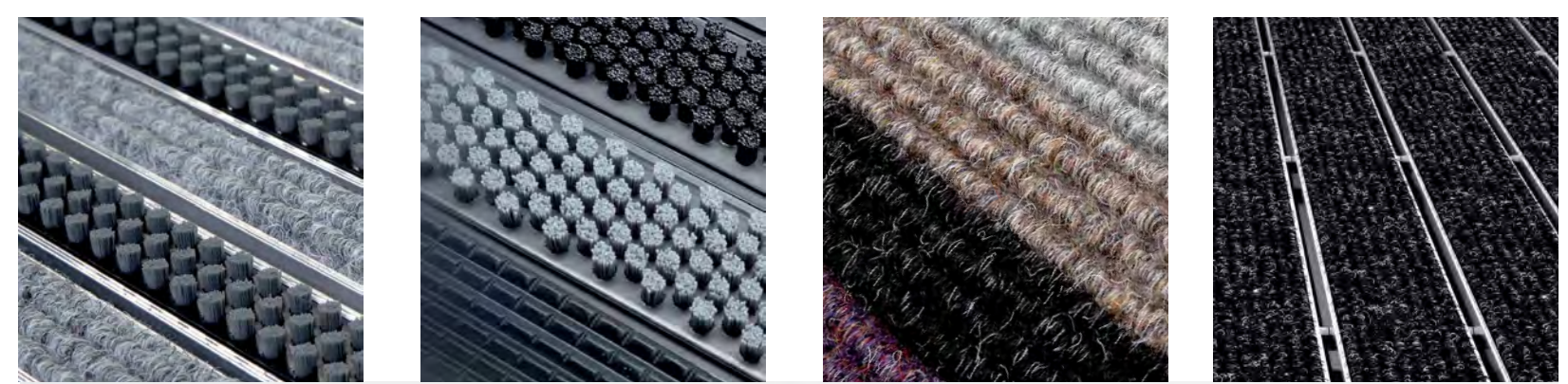
## ACO Mats

### Entrance matting systems

#### Product overview

ACO offer aesthetically pleasing solutions in many functional variations. They will keep your entrance clean by eliminating dust and fine dirt and protect your expensive flooring. The shoe scraper mats are framed to stop them slipping and are installed flush with the floor surface, so level access to the entrance area is easy to achieve. ACO shoe scraper systems are available in individual dimensions to meet the requirements of a huge range of installation situations.

- System of solutions for all three zones of application
- Flawless functionality
- Freedom of design in shapes and layouts
- Customized appearance
- Variety of sizes and profiles for different traffic intensity
- Sophisticated details, including high quality stainless steel profile that can be customized with you hotel brand or navigation text or integrated LED lights







## ACO Uniface cover

Indoor access covers

### Product overview

Hotels buildings need to meet special design expectations and often set a new standard for aesthetics and visual appearance. Surfaces are often design highlights. ACO Access covers provide freedom for planners without practical limitations. Recessed access covers are suitable for a thin floor surfaces in thickness up to 15 mm. The cover must be filled-up with concrete of required quality (C35/45) in order to achieve declared load capacity.

ACO Access Covers can be flexibly installed into any interior or exterior areas. Their installation and handling, as well as their maintenance and cleaning, are easy.

A wide range of standard types with many options, tailor made production and the possibility of using various floor surfaces make an ACO Access Cover look like an inconspicuous chameleon smartly merging into its background while retaining its full functionality and safety.

- Excellent optic aesthetics
- Meets declared load class up to M125
- Corrosion resistant alloy
- Precision thanks to crimping (mechanical fixing)
- 2+1 sealing – water/odour tight+sand/ dust tight
- Easy opening – prevents blockage
- Easy installation – positioning of the cover in frame
- Tiny tolerances, perfect fit
- Very small corner parts (30×30 mm)
- Brass nut to prevent blockage
- Reinforcement in optimal position

Roof Terrace & Facade

Kitchen

Bathroom

Entrance & Lobby

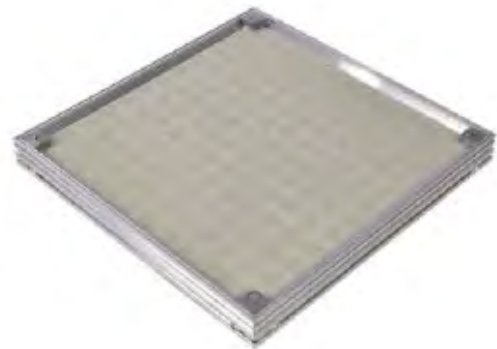
Spa & Pool

Basement

Parking

Garden&Landscaping

### ACO Uniface Smart

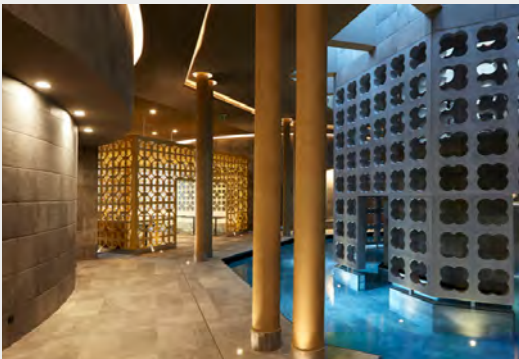
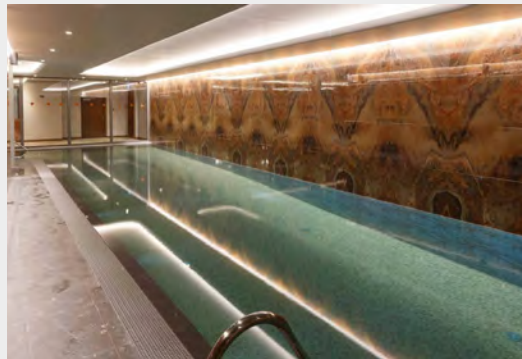


### ACO Uniface Shallow





# Spa & Pool





# Spa & Pool

Spa and pool areas require special attention to every detail, usually being the signature area of the hotel building. As well as outstanding aesthetics and design that contributes to the feeling of wellness, particular focus must be devoted to safety and hygienic performance of the systems. Both outdoor and indoor areas are exposed to aggressive agents and/or weather conditions, therefore the materials used must be highly resistant and comply with strict safety requirements.



## Safety

Safety is most certainly a major concern in public buildings and sensitive areas such as pools and spa areas have even higher demands. Minimizing the risk of injuries requires barrier-free movement, anti-slip surfaces, no sharp edges and special requirements in the areas where barefoot walking occurs. Easy cleaning and high flow rate to prevent blockage are important in terms of hygiene and maintenance costs.



## Durability

In outdoor pools the drainage systems are exposed to weather conditions. For indoor pools a major point to be considered is the reliable sealing of the surfaces, as leakage of chlorinated water can cause major damage to the construction. In addition, cleaning and disinfectant agents used in pools, as well as salty water in case of seaside locations can impact the surfaces. Therefore high quality materials such as stainless steel or cast iron, or high quality composite materials should be considered.



## Individual Design

Modern wellness areas feature sophisticated, generous space with barrier free surfaces. Floors covered with ceramic or natural stone are an integral part of the interior design. Surface slopes and transitions between different materials should be carefully planned. The drainage system could be discreet and unobtrusive or present a design feature. Projects often require versatile solutions in terms of design, size and customized shapes.



## European norms and regulations

- **EN1253** - Gullies for buildings.
- **EN1433** - Drainage channels for vehicular and pedestrian areas.







*Technology and craftsmanship  
are at the heart of our business*



ACO employs extensive research and product innovation to stay at the cutting edge of drainage design and deliver “the future of drainage”. Our aim is to understand how drainage acts in different environments so we minimize potential threats and optimize cleaning performance. We cooperate with world leading sanitation experts to improve our cleaning performance. All these activities give our R&D teams feedback about the latest trends and insights, and allow us to stay true to our commitment to delivering the ultimate drainage performance. All of our knowledge and expertise about hygiene and drainage integration is incorporated into product design, which comes to life in our production facilities. With more than 40-years experience of stainless steel manufacturing, ACO continuously adopts new technologies and processes to ensure our products deliver the ultimate hygienic performance. ACO uses advanced technologies to ensure customers get the very highest quality products. As one of the world's leading stainless steel drain

producers we are well aware how an important role plays functional drainage of damp areas such as swimming pools, wellness or spa areas. In addition to the correct and functional drainage design, great emphasis is also placed on safety, protection against injuries, hygiene and last but not least individual design. Therefore we offer several types of drainage depending on its location, functional requirements and design preferences of the investor or architect. We always work to find the best solution with regard to the functionality, safety of people and to optimize the cost of both acquisition and operating costs. In order to meet all project requirements, construction, drainage is mostly made to measure. Technical consultancy in the design phase and during construction is an integrated part of our solution.



## ACO System solutions for spa & pool



**ACO Euroline**



**ACO Slot channel**



**ACO ShowerDrain  
Flex**



**ACO Floor Gullies**





Roof Terrace & Facade  
Kitchen  
Bathroom  
Entrance & Lobby  
Spa & Pool  
Basement  
Parking  
Garden&Landscaping

## ACO Euroline

Channels with gratings

### Product overview

ACO Euroline channels offer the perfect solution for collecting water from pedestrian areas such as alleys, outdoor pools, playgrounds and gardens. The system offers a variety of designs to meet architectural requirements – such as stainless steel, cast iron or colored gratings. While providing safety and comfort for pedestrians, the gratings are also drivable. The system is easy to install and offers trouble-free maintenance.



- Polymer concrete or plastic channel body
- Variety of design gratings made of cast iron, stainless or galvanized steel
- Option for slot frame for discreet drainage
- Anti-slip and drivable



**ACO Euroline**



**ACO Hexaline**







Roof Terrace & Facade  
Kitchen  
Bathroom  
Entrance & Lobby  
Spa & Pool  
Basement  
Parking  
Garden&Landscaping

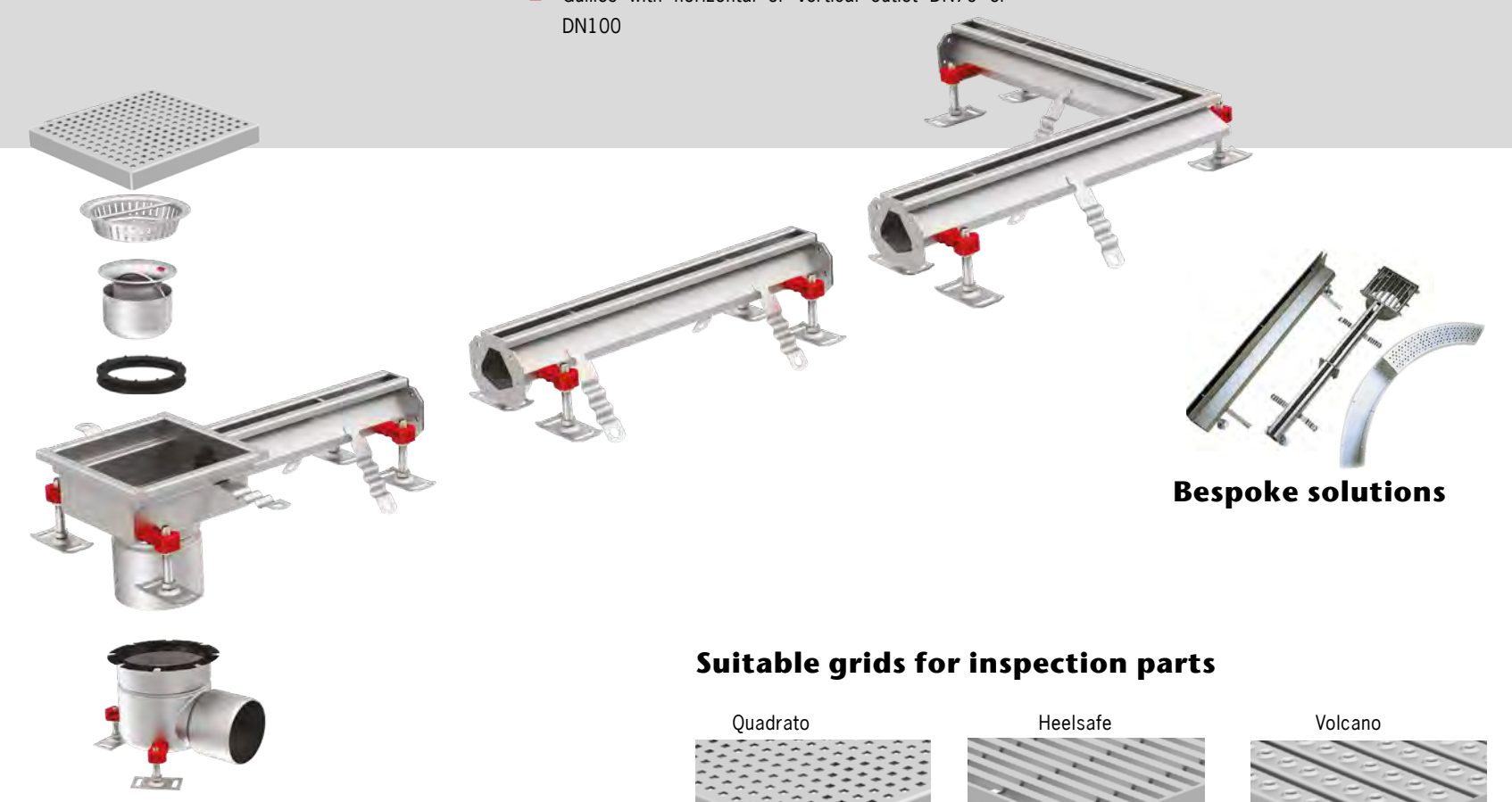
## ACO Slot channel

Stainless steel slot drainage

### Product overview

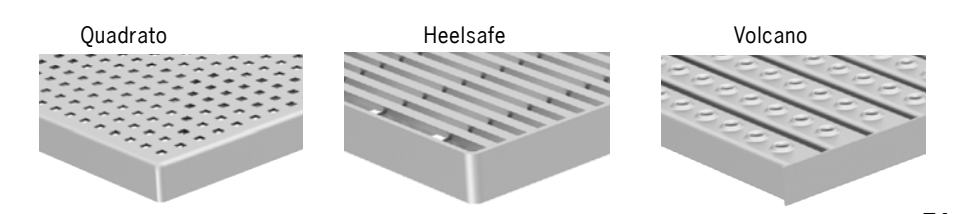
Thanks to its narrow profile, the 8mm slot channel is almost invisible at the floor. It is being installed mainly near swimming pools and in such environments, where unobtrusive drainage is required. The clear width of slot is only 8mm and the visible floor width with edges 14mm (folded edge) or 38mm (standard edge 15mm).

- Certified according to EN 1253 1 and EN 1433
- Available in 1.4301 (304) or 1.4404 (316L) grades of stainless steel
- Material thickness 1,5 mm
- Fully pickled and passivated
- Rubber edge infill for standard edge 15mm
- V-profile bottom for enhanced flow efficiency at low flow rates and for improved self-cleaning performance
- Adjustable EasyFix levelling feet
- Revision pieces 170x170mm for combination with ACO gullies EG150 (up to flowrate 1,5l/s) and ACO gully 142 (up to flowrate 1,9l/s)
- Gullies with horizontal or vertical outlet DN70 or DN100



### Bespoke solutions

### Suitable grids for inspection parts







Roof Terrace & Facade  
Kitchen  
Bathroom  
Entrance & Lobby  
Spa & Pool  
Basement  
Parking  
Garden&Landscaping

## ACO ShowerDrain Flex

Custom made line drainage

### Product overview

ACO FlexDrain is a reliable and flexible solution for shared showers in pools and spa areas. The length of the channels can be ordered in compliance with the specific requirements. The internal longitudinal gradient of the bodies guarantees effective drainage. Stainless steel gratings in various designs offer aesthetic design, safety and easy cleaning.

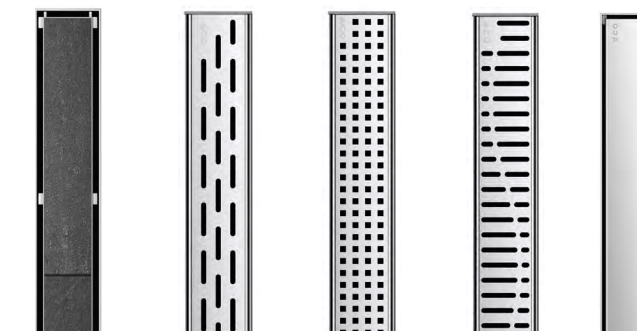
- Width of single segment up to 6 m. Segments can be connected without visually disturbing the surface
- Typical production material is stainless steel grade 1.4404 (AISI 316) 1.4301 (AISI 304).
- Visible floor width 90 mm
- Horizontal flange for connection to thin-bed sealing
- Optional vertical flange for installation next to the wall
- Internal longitudinal slope of the body
- The shape and dimensions of the trough can be easily adapted to project requirements (corner joints, T-joints and angled joints).



### ShowerDrain R70



- Channel width excl. flange and upstands: 70mm
- Channel height incl. drain body and upstands: 85
- Welded drain body DN 50 horizontally
- Tile edges height: 12 mm, mounting feet L: 200 mm
- Material: stainless steel 1.4301







# ACO Easyflow

Floor gully

## Product overview

ACO offers a wide range of floor gullies suitable for spa & pool applications. To meet the requirements of EN 1253-1 we recommend the installation of a ACO Easyflow floor gully. It has been designed for different floor thickness and floor structure heights and offers an optimum pipe access after removal of the foul air trap. ACO Easyflow floor gully is retrofittable thanks to an assembly-friendly fire protection kit. It is available for all gully bodies with vertical socket inclination in ND 50, 70 and 100.



- Material: Plastic, Top section ABS Gully body PP
- Outlet socket: Suitable for all push-fit pipe socket systems
- Flow rates: 1.0 to 1.6 l/s
- Gully body flange type: Clamping flange
- Mounting: Ready for installation
- Grating variants:
  - Stainless steel (round or square)
  - Tileable, Glass
- Retrofittable upgrades:
  - Fire protection
  - Lighting option
  - Dry foul air trap

Roof & Terrace  
Kitchen  
Bathroom  
Entrance & Lobby  
Spa & Pool  
Basement  
Parking  
Garden&Landscaping

## ACO Easyflow



## Designer gratings made from stainless steel





Basement





# Basement

Modern and innovative systems give a whole new value to underground spaces of the building. Fresh air, natural light and protection against flood or moisture provide the opportunity to make use of the basement, not only as storage and facility rooms, but also a variety of other purposes. With increasingly extreme weather events, the main objective is protecting the construction, underground spaces and any equipment installed against flood. Designing effective protection systems prevents potential material and financial damages which could also affect the functionality of the whole building.



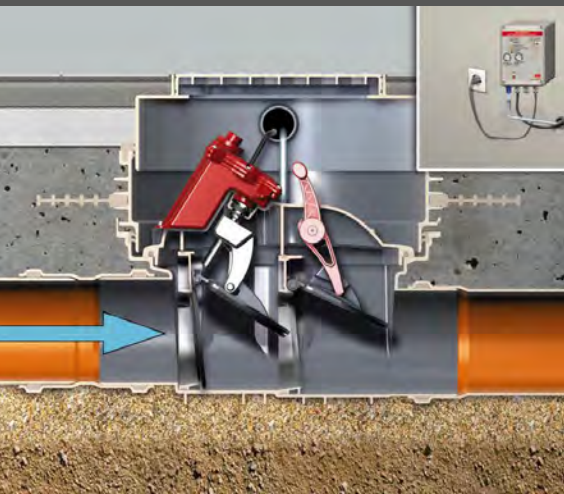
## Water tightness

Climate change causes increasingly extreme weather incidents. Heavy rainfalls more frequently and initiates significant damages to buildings and infrastructure. The challenge to protect the lower levels of the building from flood and moisture is of utmost importance. The objective is to protect the construction, the underground spaces and equipment and thus the safety and comfort of inhabitants.



## Backflow control

In the case of heavy rainfall the public sewer may be overloaded, the water presses down into the basement. Backflow control ensures that the basement remains dry. The underground areas in particular can be affected quickly by backwater. This may result in damages to equipment and cause significant maintenance costs.



## Natural light and fresh air

The lack of fresh air or natural light significantly limits the functionality of the underground level of the building. Especially in urban areas with dense construction, every square meter is valuable for the investor. Providing access for natural light and ventilation not only gives more opportunities for use of the basement but also reduces the operational cost of the building.



## European norms and regulations

- EN 14351 - Windows and doors. Product standard, performance characteristics. Windows and external pedestrian doorsets







*Smart solutions for a whole new purpose of underground spaces*



Modern architecture trends clearly put high requirements for functionality of basement spaces. Real estate prices and return of investment rates imply that each square meter of the building should be used as effectively as possible. With the complexity of hotel projects, there are a variety of facilities situated in the basement levels - eg. a fitness centre, spa area, staff offices or house-keeping equipment. Irrespective of the use designated to the below ground area, there are a number of factors that can guarantee safe and cost-effective operation within the areas and protect the building as well as equipment and ensure constant operation of the facilities. The most important prerequisite is reliable anti-flood protection. Climate change requires pioneering innovations to counteract extreme weather conditions. That includes systems that guarantee ultimate water tightness, back-flow prevention and energy saving. In addition, ACO's innovative solutions for base-

ment areas can give a whole new purpose to the underground spaces. Designing a system that allows natural light and fresh air into the room can make it comfortably inhabitable for a range of purposes. In addition to the innovative system solutions, ACO work side by side with architects and planners and to support reliable designs with extensive knowledge on trends, regulations and contemporary requirements, professional consulting, calculation software and statutory documentation.



## ACO System solutions for basement



**ACO Therm Lightshaft**



**ACO Therm Cellar window**



**ACO Therm Block**



**ACO Backflow systems**





- Roof Terrace & Facade
- Kitchen
- Bathroom
- Entrance & Lobby
- Spa & Pool
- Basement
- Parking
- Garden&Landscaping

## ACO Therm Lightshaft

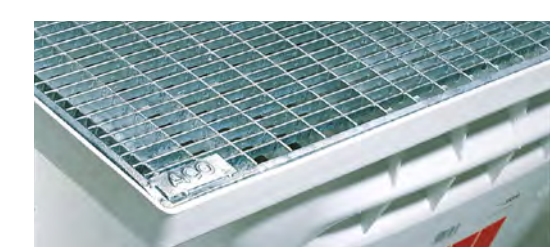
### Product overview

The ACO Therm light shafts are highly rigid and can be used not only for standard areas but also for pressurized water. They can be adapted to the existing level of the ground or floor with the help of stacking components. ACO offers reliable protection for your basement and its contents. The ACO Therm basement protection system, which comprises the ACO Therm Block with an integrated window that is proof against flooding, together with the ACO Therm light shaft that is mounted so that it resists pressurized water, with the ACO light shaft drainage and ACO backflow protection, ensure the rooms in the basement are dry, warm and lit naturally.

Awards for the design profile grating:  
**Plus X Award**

- Best product 2016/2017
- High quality, design and functionality

**Iconic Award 2016**  
■ Winner category products facades



**ACO Therm Lightshaft with backflow stop**  
The ACO Therm light shaft is additionally secured thanks to the backflow stop. The integrated valve ensures that backflow is not pushed into the light shaft and thus can not get into the basement.





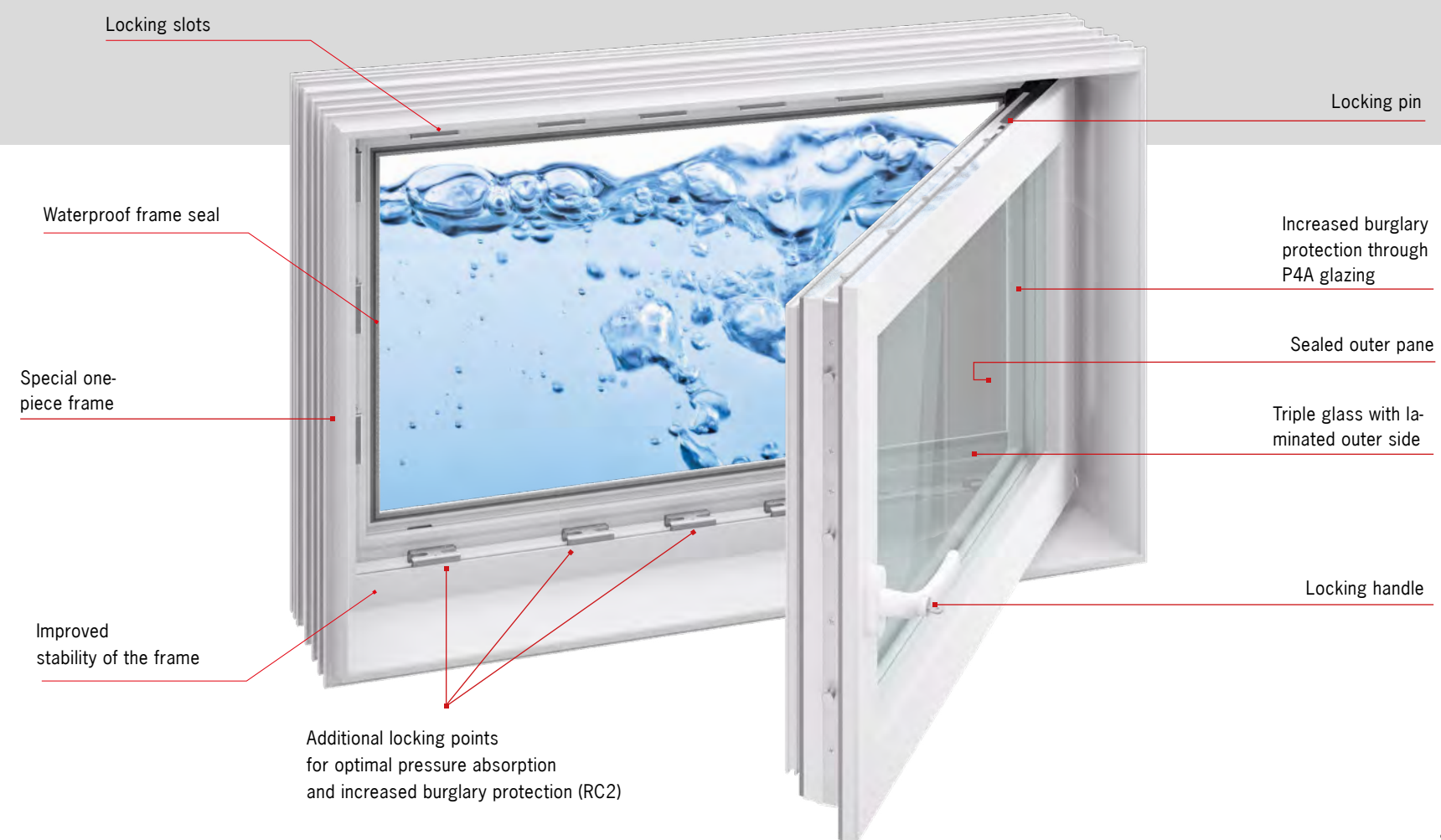
## ACO Therm Cellar Window

### Product overview

For new building construction, the ACO Therm® system consists of windows, which are based on current and future insulation standards. All ACO Therm® 3.0 windows - whether standard or passive house version - contains a 4-chamber plastic wing and a 5-chamber plastic frame with a profile depth of 82 mm.

Mainly for flood-prone areas, a flood-proof version of the ACO Therm® 3.0 reveal window is available.

The high-waterproof ACO Therm® 3.0 is also burglar-resistant to class RC2.





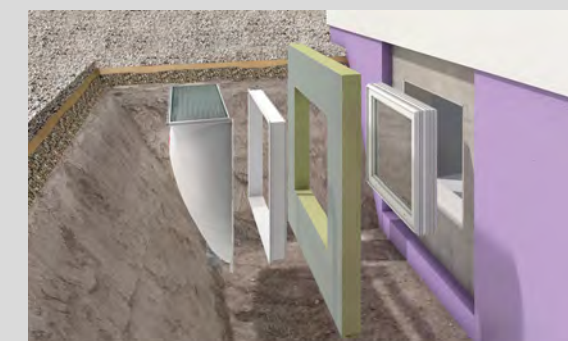


Roof Terrace & Facade  
Kitchen  
Bathroom  
Entrance & Lobby  
Spa & Pool  
**Basement**  
Parking  
Garden&Landscaping

## ACO Therm Block

### Product overview

ACO Therm System provides integrated solution for basements. The innovative ACO Therm Block provides heat-insulation, waterproofing, and flood protection in one system. It is compatible with standard lightshafts and integrated waterproofing. Additional benefit of the system is the quick and simplified installation, preventing the need of additional finishing.



- The high quality PUR-material guarantees easy installation, watertight system and reliable heat-insulation
- Sealing flange for watertight connection
- Easy installation without need of additional finish
- Integrated system with ACO Therm Lightshafts and Cellar windows

### ACO Therm Block range



Standard panel with integrated window frame



Standard panel with integrated therm-window



Panel with integrated waterproofing and window frame



Panel with integrated waterproofing and therm-window





## ACO Triplex & Quatrix-K

### Backflow preventers

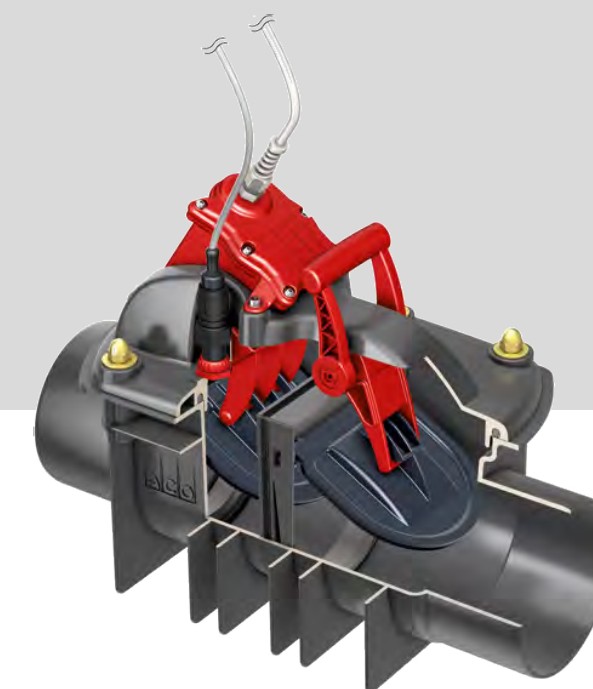
#### Product overview

Active backflow safety valve units are also differentiated according to the type of wastewater: either wastewater containing faeces or wastewater free of faeces. A large number of lifting plants, submersible pumps and pump stations are available for this purpose. Active backflow safety valves are used wherever there is no natural gradient towards the sewer.



#### Backflow safety valve Triplex for water without faecal matter

- Made of plastic
- Type 2 tested to EN 13564
- For non-faecal wastewater (grey water) and rainwater harvesting systems
- With two automatically closing backflow flaps, one of which as a manually lockable emergency valve
- With large cleaning and maintenance opening and test hopper



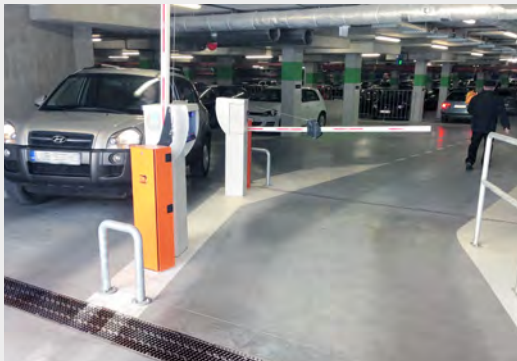
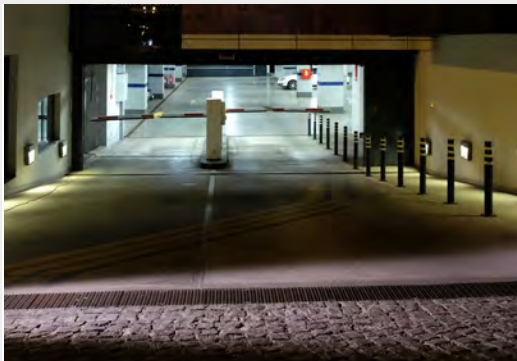
#### Quatrix-K – for exposed pipework

- For installation in exposed pipes
- Type 3F tested to EN 13564
- With double backflow safety valve
- With 1 automatic operating seal
- With 1 manual emergency valve
- With large cleaning and maintenance opening and test pipe
- With ready to plug in, electrical control unit IP 54 with integrated 4-week self-monitoring
- With visual and acoustic backflow signal

Roof Terrace & Facade  
Kitchen  
Bathroom  
Entrance & Lobby  
Spa & Pool  
Basement  
Parking  
Garden & Landscaping



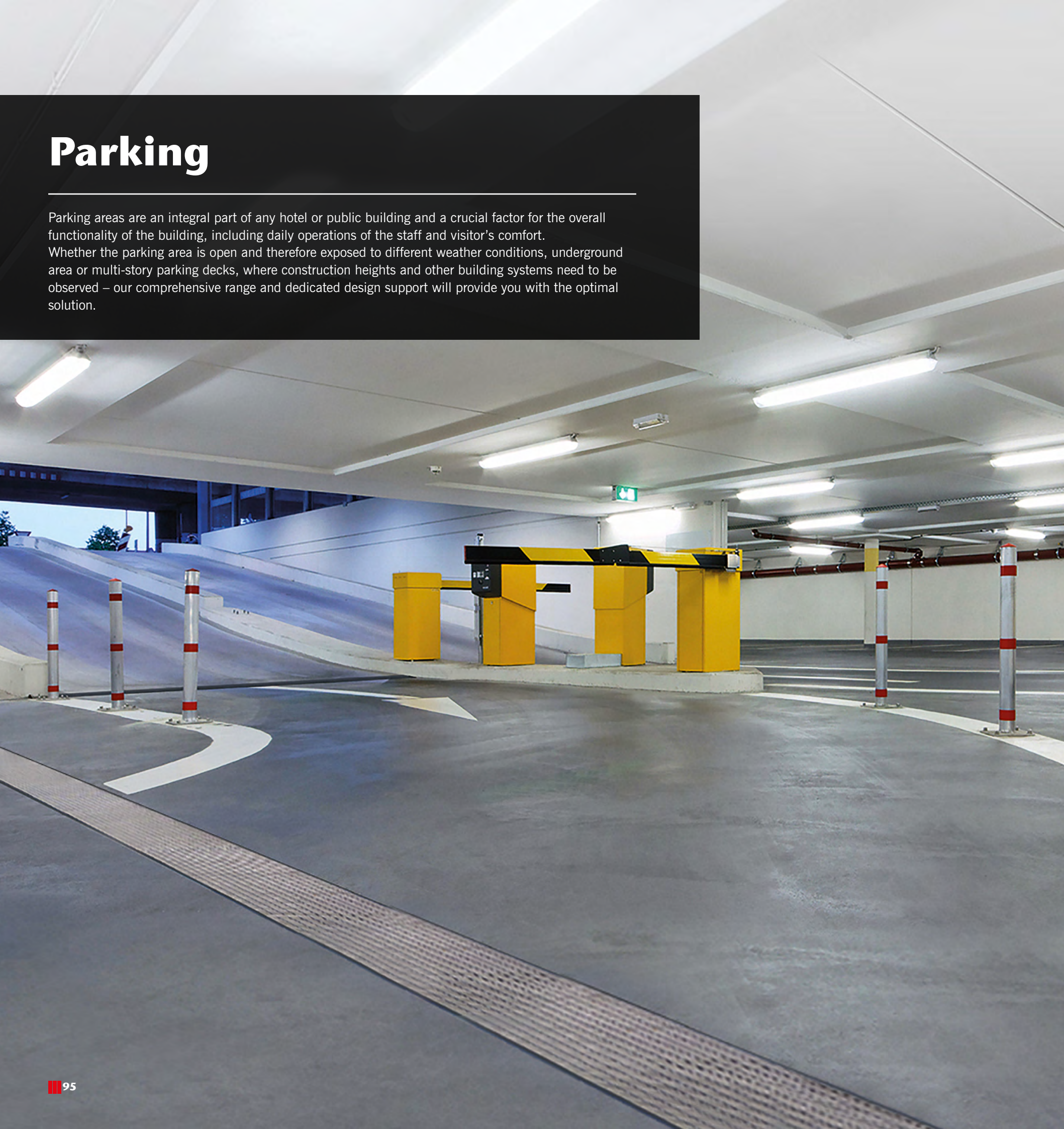
# Parking





# Parking

Parking areas are an integral part of any hotel or public building and a crucial factor for the overall functionality of the building, including daily operations of the staff and visitor's comfort. Whether the parking area is open and therefore exposed to different weather conditions, underground area or multi-story parking decks, where construction heights and other building systems need to be observed – our comprehensive range and dedicated design support will provide you with the optimal solution.



## Effective drainage

The impermeable surface of public parking areas creates a significant volume of surface water runoff that needs to be addressed. Underground parking spaces often require drainage solutions with restricted installation space and special attention in the area of the access ramps, where slopes and intensive traffic imply special requirements to the drainage system.



## Aesthetics

Drainage systems are integral part of landscaping in public parking areas. Therefore, their finish and design are required to complement and enhance the aesthetic qualities of the property. Modern surface water management solutions are designed to provide further architectural and aesthetic value to the project with variety of design options, discrete slot openings and integrated LED lights.



## Surface water treatment

At any site, such as car parks, where there is risk of surface water being contaminated by hydrocarbons are required steps to prevent pollution. Sustainable drainage systems require control of surface water runoff and, as part of this approach, oil separators treat water before being discharged.



## European norms and regulations

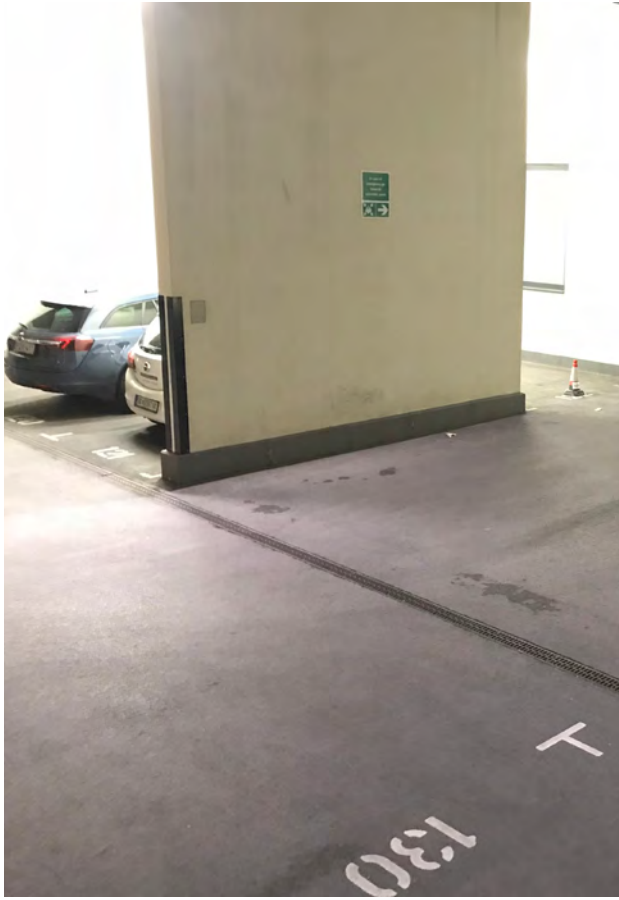
- **EN 1433** - Drainage channels for vehicular and pedestrian areas
- **EN 858:2003** - Separator systems for light liquids
- **EN 124** - Gully tops and manhole tops for vehicular and pedestrian areas
- **EN 13564:2003** - Anti-flooding devices for buildings
- **EN1253** - Gullies for buildings







*Complete surface water treatment solutions for indoor or outdoor parking*



As the world leader in surface water management and water protection, ACO offers a comprehensive range of line drainage solutions. Whether the parking area of your hotel is external, underground or you have a parking deck you can freely choose between a variety of products, designs and materials.

ACO Drain® range offers a variety of channels with design gratings, slotted or monolithic channels as well as kerbs with integrated drainage.

In the design of components and structural elements, the choice of suitable materials determine the aesthetic and functional qualities of the product. The materials used by ACO are characterized by their strength, ageing resistance and their resistance to aggressive media, frost, heat and sunlight. Thanks to their long life and recyclability, they are equally sustainable and environmentally compatible and are used in an application-oriented way.

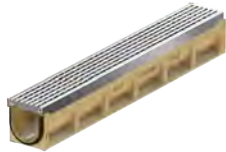
Surface water that runs in parking areas contain significantly more contamination than most

people are aware of. Traffic areas are contaminated with harmful materials from tyres (abraded material), brake dust and exhaust gases and traces of petrol and oil. Therefore it is essential that the collected water is treated and cleaned before discharged into the sewage systems or in nature. ACO offers a complete system solution for surface water management, including oil and heavy metal separators, retention and infiltration systems to fit your project requirements.

Surface water management of underground or indoor parking can often be a complex task. The limited installation space in parking decks is a major challenge for drainage systems. At the same time, a special focus is required to providing watertight connection between the channel, the slab and the pipe system. The ACO Design Team is able to work closely with you through the entire design process. Our unique Hydraulic design software enables the efficient and accurate hydraulic design of surface water management schemes using channels as means of conveyance.



## ACO System solutions for parking



**ACO MultiDrain  
Seal in**



**ACO KerbDrain**



**ACO Qmax**



**ACO Monoblock**



**ACO Deckline**



**ACO Oil separators**





# ACO MultiDrain Seal in

Drainage channels with design gratings

## Product overview

The ACO MultiDrain range is designed to provide advantages for all – from the design phase to the installation and maintenance. The Seal in technology consists of the waterproof, frost-resistant polymer concrete channel body and a standard integrated 2-component EPDM seal on the gutter joint. It offers a variety of load class options, sizes, edge rails and the widest choice of standard, design or customized gratings. In addition to all that you can benefit from professional design tools to visualize the surface design and calculate the optimal drainage performance.



reddot design award



DESIGN  
AWARD  
2015

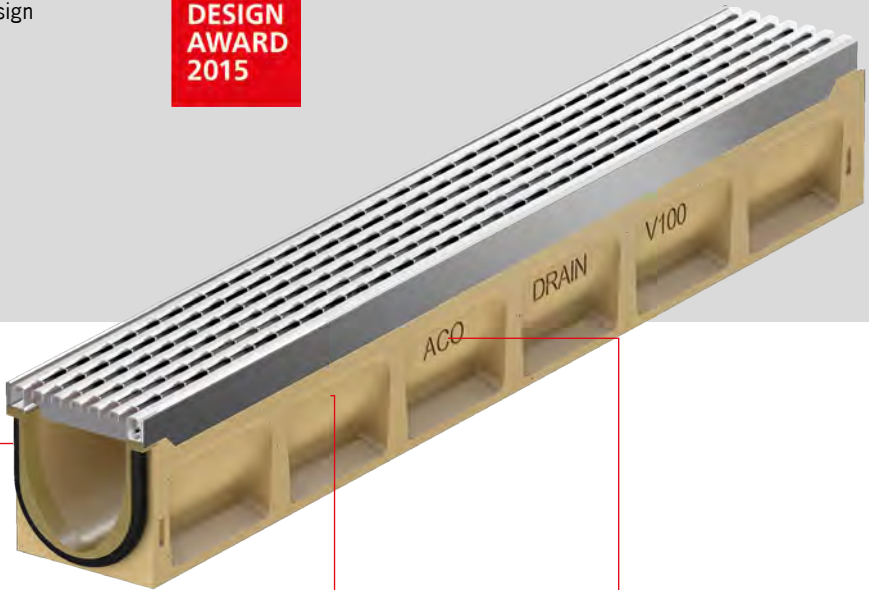


German  
Design Award

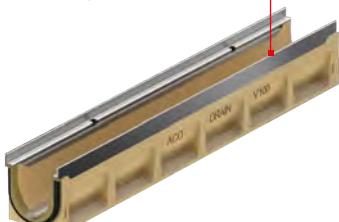
NOMINEE 2015



- Choice of design gratings: Cast iron, stainless steel, galvanized steel or plastic
- Freedom to create individual designs, as well as option for integrated LED lights
- Polymer concrete channel for optimal stability, hydraulic performance and resistance
- Flexible design options, due to variety of sizes, including low-profile solution



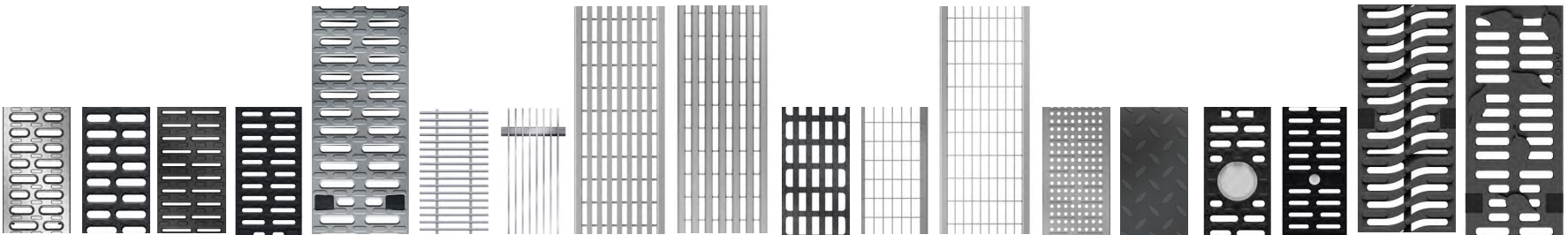
Frame: steel, galvanised



Frame: stainless steel



Frame: Cast iron







# ACO KerbDrain

Kerbs with integrated drainage

## Product overview

ACO KerbDrain is an award winning combined kerb and drainage system specifically designed and developed to form an integral part of any modern, sustainable surface water management solution. The system provides versatile solutions for traffic and parking spaces, curves and access areas. It guarantees optimal lateral drainage while leaving the surface uninterrupted.



- Combination of surface drainage and curbstone: "2 in 1"
- Monolithic system with no loose parts
- Manufactured from polymer concrete for optimal stability and resistance
- Variety of elements for form curves and access areas

Roof Terrace & Facade  
Kitchen  
Bathroom  
Entrance & Lobby  
Spa & Pool  
Basement  
Parking  
Garden&Landscaping

Choice of depths  
Available in 255mm, 280mm, 305mm, 380mm, 405mm and 480mm depths

DF hole for draining porous asphalt or providing temporary drainage of subsurface during installation

Sealant groove for simple watertight installations

Made from sustainable materials  
Thermally stable, chemically resistant, environmentally friendly polymer concrete.

Drainage inlets designed to resist debris blockage

50% higher impact resistance than traditional kerbs

Load Class D 400  
ACO KerbDrain® is fully certified to Load Class D 400 EN 1433:2002 and CE marked

Installation benefits  
Kerb units available in 1000mm and 500mm lengths

External surfaces anchor channel securely into concrete surround to prevent displacement

Suitable for highway drainage in compliance with EN 1433:2002

A detailed view of an ACO KerbDrain kerb unit, showing its monolithic design with integrated drainage inlets and a sealant groove. The unit is made of polymer concrete and is designed for easy installation and high durability.





Roof Terrace & Facade  
Kitchen  
Bathroom  
Entrance & Lobby  
Spa & Pool  
Basement  
Parking  
Garden & Landscaping

## ACO Qmax®

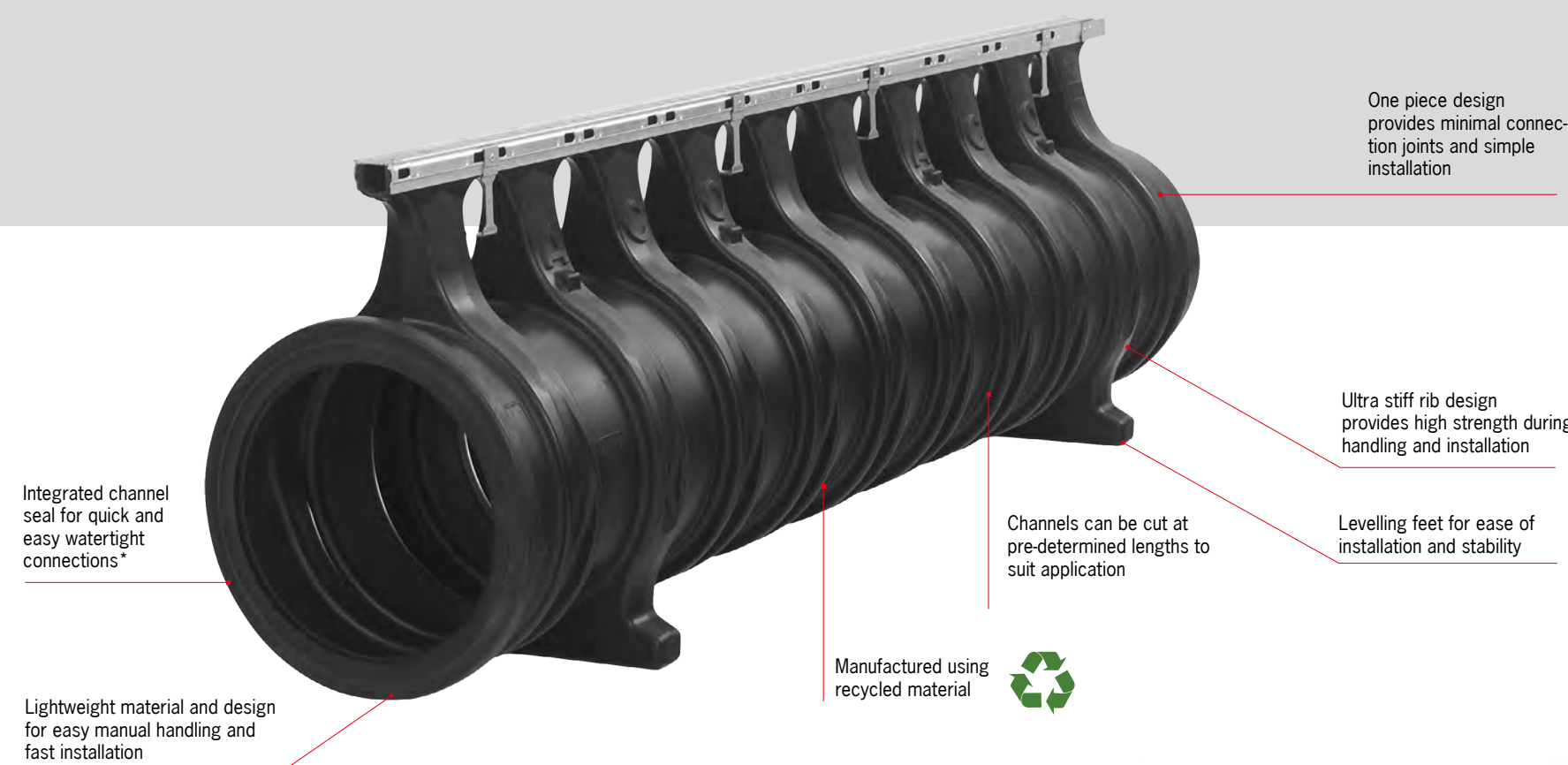
High capacity slot drainage system

### Product overview

ACO Qmax® satisfies the demand for a versatile, high capacity slot drainage system for applications involving small to large catchment areas. It is specifically designed to form an integral part of any modern, sustainable surface water management solution. The system maximizes the hydraulic capacity available providing effective storage, attenuation, and eliminating carry over in stormwater conditions.



- Hydraulic capacity slot channels
- All advantages of slot and heavy duty channels in one system
- Highest hydraulic capacity and attenuation
- Variety of sizes and edge rails to suit your project requirements



Q-guard cast iron edge rail



Q-flow galvanized steel edge rail



Q-flow cast iron edge rail



Q-guard galvanized steel edge rail



Q-slot galvanized steel edge rail





Roof Terrace & Facade  
Kitchen  
Bathroom  
Entrance & Lobby  
Spa & Pool  
Basement  
Parking  
Garden&Landscaping

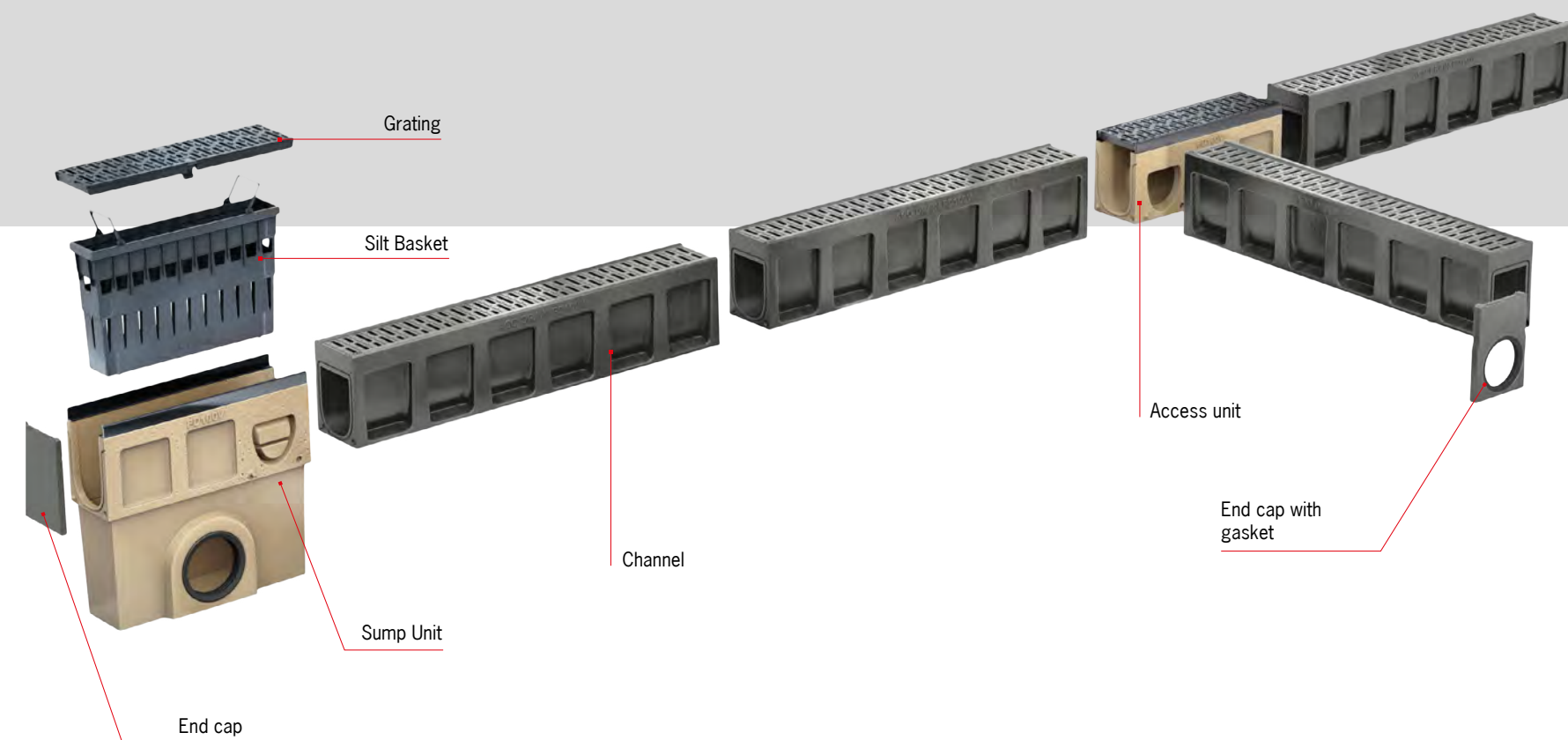
## ACO Monoblock

Monolithic drainage channels

### Product overview

ACO Monoblock is a one-piece channel drainage system that delivers multiple benefits including safety and sustainability, economical and efficient installation and aesthetic choices across various applications. Designed to meet extreme requirements, such as intensive traffic and weather conditions, the system provides also optimal comfort for pedestrians and easy maintenance.

- Monolithic structure for superior stability even in extreme conditions
- No loose parts, traffic and vandalism safe
- Suitable both for pedestrian and traffic zones
- Colour options to suite aesthetic requirements







## ACO Deckline

Line drainage for parking decks

### Product overview

ACO Deckline channels are made from only highly resistant materials such as polymer concrete or stainless steel. Suitable gratings are made from composite plastics, stainless steel or cast iron. For a lengthy lifetime of building and drainage channels, ACO strongly recommends to use exclusively run-off drainage systems in combination with grated channels for easy maintenance and cleaning in parking facilities.

#### ACO Deckline S without coating-flange

#### ACO Deckline S with coating-flange

#### ACO Deckline P



- Compatible with penetration element to connect sealing layer underneath the channels.
- Watertight connection system with 3M sealing tape. No welding. No screwing.
- Quick and easy installation process through simple connector system. Optional "hanging" installation.
- Material: Stainless steel V2A.
- High load class performance up to C250.
- Flexible: Recommended solution for concrete or screed flooring. Others equally possible.

- Integrated flange for firm and durable connection with resin coating layers.
- Watertight connection system with 3M sealing tape. No welding. No screwing.
- Quick and easy installation process through simple connector system.
- Material: Stainless steel V2A.
- High load class performance up to C250.
- Recommended solution for resin coated surfaces. Others equally possible.

- Designed for asphalt surface, others equally possible
- Watertight connection system with 3M sealing tape. No welding. No screwing.
- Material: Polymer concrete
- Installation - Quick and easy
- High load class performance up to C250.
- Robust type-I tested channel in three colour options (natural, grey, anthracite).





## ACO Oil Separators

Surface water treatment for light liquids

### When do light liquid separators have to be used?

The use of light liquid separators is stipulated by the regulations in DIN 1986-100, Section 6.2.3: "If petroleum or light oils, especially those that are combustible or can form explosive atmospheres, enter the sewers, separator systems for light oils must be used downstream of the discharge points." Discharging petroleum and light oils into public sewers can cause groundwater and drinking water contamination, and in serious cases, cause extensive environmental damage to flora and fauna. The solution to this problem is a light oil separator. Any light oil in the wastewater is collected in a separator tank and prevented from being discharged from the separator. The discharge outlet closes automatically when the maximum storage capacity has been reached. The light oil which collects in the separator is disposed of by certified recycling companies at regular intervals.

#### ACO Coalisator P

- for free standing installation according to EN 858
- certificate 7310434-01 (NS 3-10)
- inlet and outlet connection according to outside diameter D depending on nominal size of separator
- inlet and outlet parts of polyethylene
- with integrated removable coalescing filter
- automatic closure device with float switch, density of float switch: 0.9 g/cm<sup>3</sup>



#### ACO Oleopator P

- for ground installed installation according to EN 858
- certificate 7310434-01 (NS 3-10)
- inlet and outlet connection according to outside diameter D depending on nominal size of separator
- inlet and outlet parts of polyethylene
- with integrated removable coalescing filter
- automatic closure device with float switch, density of float switch: 0.9 g/cm<sup>3</sup>





# Garden & Landscaping





# Garden & Landscaping

Design of green areas and pedestrian zones is an integral part of modern architecture and is crucial not only for the aesthetic appearance of the project but also for the comfort and wellbeing of the inhabitants.

As the meeting point between architecture and nature – landscaping faces the challenges of providing at the same time sustainable protection of the environment and, protection and design of the surface, comfort and safety.



## Surface sealing

Urban sprawl and the construction of paved areas mean less and less natural ground drainage. This can mean bigger and more expensive water treatment systems to deal with the water flowing into sewers. A sustainable solution is to ensure the large-scale seepage of rainwater back into the ground. Modern regulations are counteracting the sealing of surfaces by stipulating building restrictions and regulations limiting surface sealing.

## Functional requirements

Designing a garden, park or promenade is about balancing between creative and constructive challenges of contemporary landscape architecture. On one hand it is important to design a surface which is comfortable and safe for pedestrians or an occurring traffic. On the other – it is vital for the plants in the area to be provided with the right environment and protected from damaging impact

## Aesthetics appearance

Green areas represent an absolutely vital part of our existence. Their integrating into construction projects is significant for our comfort and well-being. Modern landscaping systems are protecting natural environment and at the same time creating visually pleasing designs in correspondence with architectural surfaces.



## European norms and regulations

- **EN 1433** - Drainage channels for vehicular and pedestrian areas
- **EN 124** - Gully tops and manhole tops for vehicular and pedestrian areas
- **EN 752** - Drain and sewer systems outside buildings







*Solutions for the interface between  
architecture and nature*



ACO's range of garden and landscaping systems help architects and landscape planners to create an attractive and sustainable water management solution which provides optimal functionality of the surface and comfort for visitors.

Tailored to the demands of the specific projects our products have finish options that complement and enhance the aesthetic qualities of any property. The modern and functional range provides the most complete and stylish surface water management offering for driveways, pedestrian and landscaped areas. The range has been manufactured to the highest quality standards, ensuring long life and service within and around your hotel landscape.

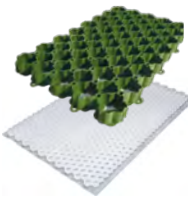
Besides a comprehensive range of drainage solutions, the range includes a variety of products that allow planners to comply with modern regulations and trends for sustainable design and preserving natural surfaces that allow water infiltration back to the ground.

ACO's ground stabilization systems are ideal for use in driveways and paths, where a natural grass or decorative gravel finish are required to complement the landscape, whilst also reducing the risk of potholes, rutting or grass damage and at the same time provide solid and even surface which is drivable and suitable for pedestrians.

The ACO Stormbrixx infiltration systems provide even further advantages. It is an optimal solutions for projects where sewer system is missing or limited, providing options for retention or infiltration of rain water. Its high void ratio reduces the cost associated with traditional soak ways and enables compliance with current building regulations concerning rainwater runoff and sealed surfaces. The range is completed by high-quality access and manhole covers, as well as cast iron tree protection systems.



## ACO System solutions for garden & landscaping



**ACO Grass&Gravel Grid**



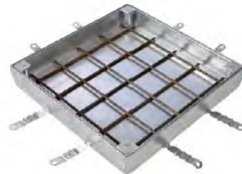
**ACO Stormbrixx SD**



**ACO Tree Girdle**



**ACO Manhole Covers**



**ACO Uniface covers**



**ACO Gully**





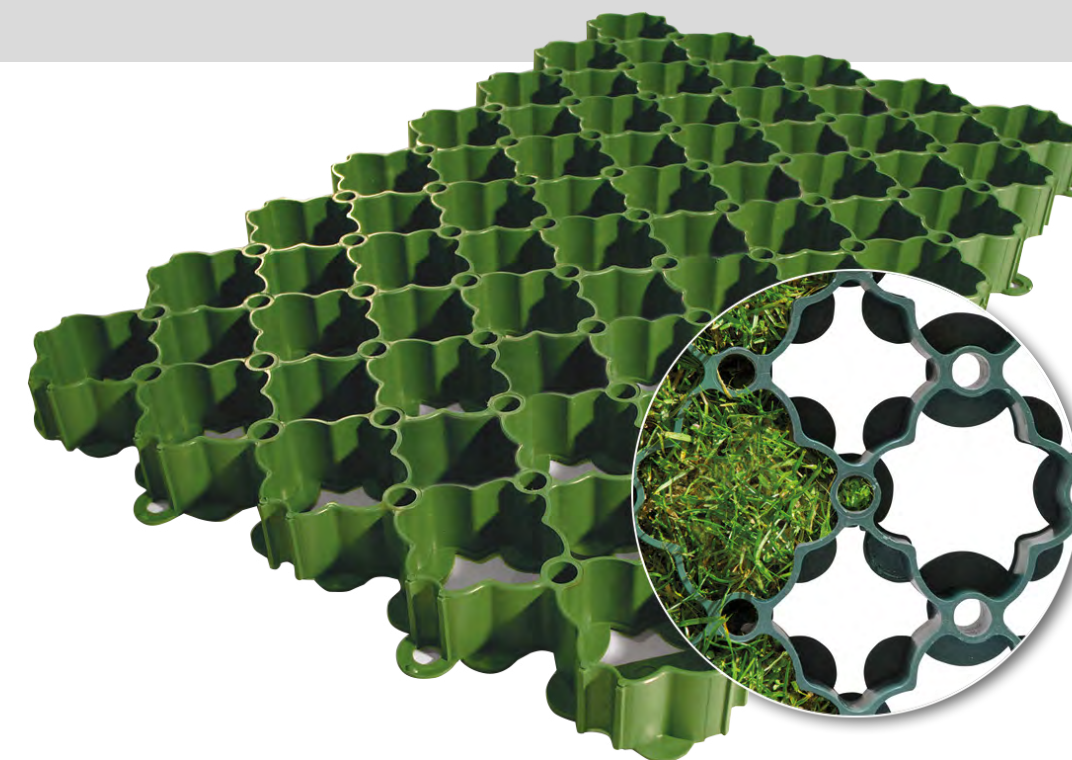
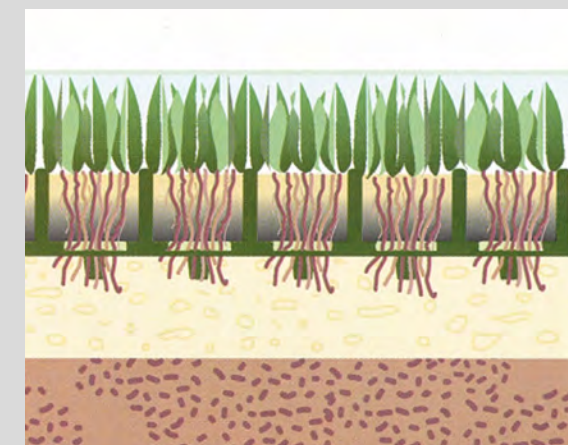
## ACO Grass Grid- pro nature

### Ground stabilisations system

#### Product overview

Green areas are vital for environmental protection. The unnecessary sealing of areas exposed to minor traffic destroys valuable green space. ACO Grass Grid is made from plastic, and ensures free rainwater seepage in parking lots, yard driveways, terraces, walkways, storage spaces, emergency routes and river bank reinforcements. These areas will remain green, yet are still load-bearing. Through the use of recycled materials, ACO promotes environmental protection. Surface drainage systems such as ACO Self® or ACO DRAIN® can be used when sealed surfaces are required to aid area drainage. ACO Grass Grid is lightweight for easy transport and handling, and simply snaps together for fast installation. While regionally varying, many building regulations specify a certain amount of “green” spaces. ACO Grass Grid allows vehicular use of these areas.

- Offers unimpeded flow to surface water
- Manufactured from 100% green recycled polyethylene.
- Product design ensures easy handling and installation
- Tiles interlock with clip-together fixings
- Coverage: 4.42 tiles per square metre
- Tiles can be easily cut to shape for irregular edging
- Strong, robust system certified to 250 tones per square metre







## ACO Gravel Grid pro

Ground stabilisations system

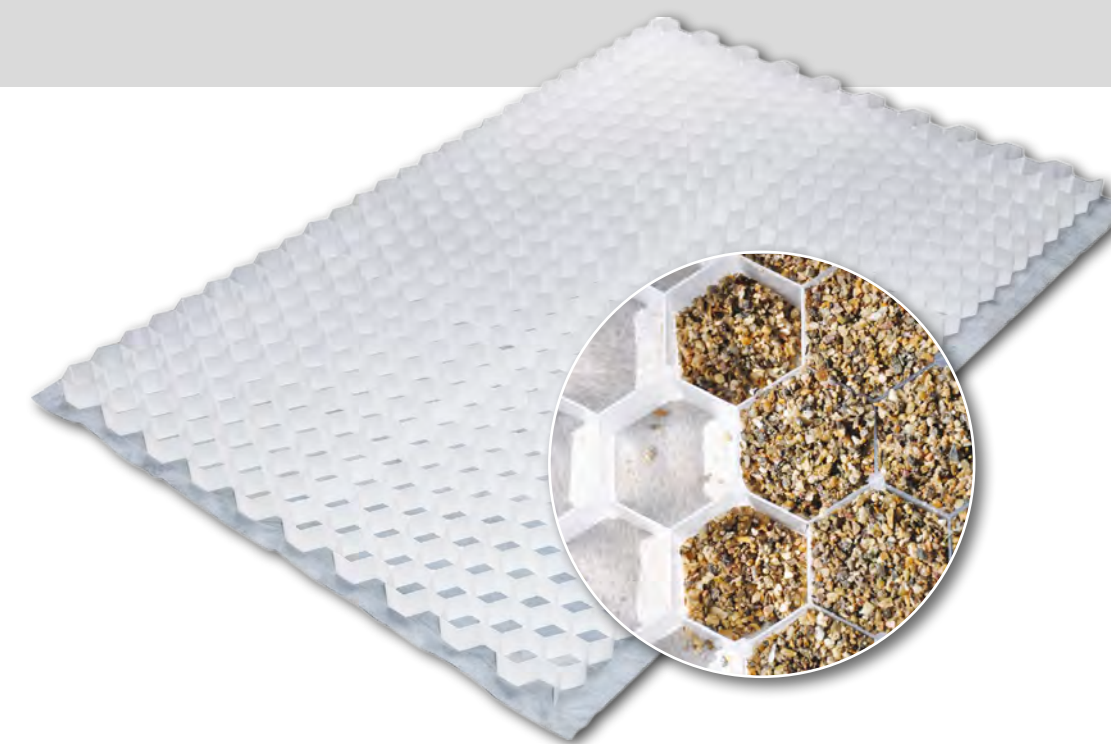
### Product overview

The honeycomb structure of the gravel stabilisation ensures that stones stay where they belong. They can no longer move left or right. This maintains a smooth surface with no ridges, troughs or holes. The ACO Gravel Stabilisation can be filled with high-grade chippings or ornamental gravel to create a customised surface.

Laying a water-permeable geotextile beneath the gravel stabilisation improves drainage of the surface. This saves having to pay municipal surface drainage fees for sealed surfaces, and prevents the formation of puddles.

Laying is very fast and easy because the honeycomb mats are laid loose next to one another. The ACO Gravel Stabilisation is perfect for municipal landscaping (e.g. in parks and

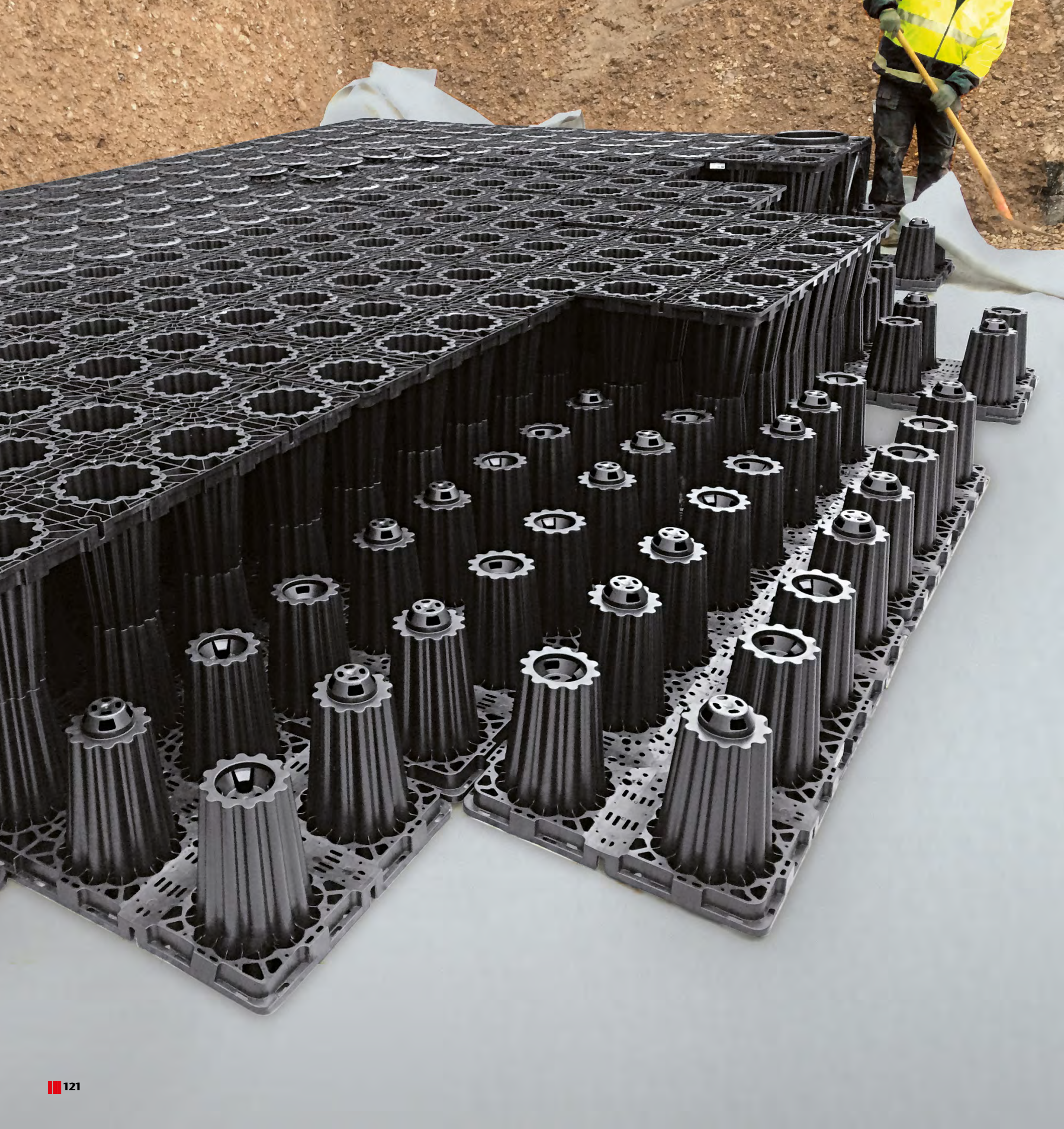
cemeteries), on garden paths and patios, yards, car parking areas, driveways and access routes, as well as roofs. The bendable ACO Edging is the ideal accessory for gravel stabilisation to create permanent attractive edges to lawns, flower beds, paths/paved surfaces and patios.



**Border profiles**  
for perfect transition between surfaces







Roof Terrace & Facade  
Kitchen  
Bathroom  
Entrance & Lobby  
Spa & Pool  
Basement  
Parking  
Garden & Landscaping

## ACO Stormbrixx SD

### Modular infiltration system

#### Product overview

ACO Stormbrixx is a modular infiltration system made from synthetic materials, which on the one hand provides storage of water from storm water and on the other hand is used to provide infiltration of the storm water. The basis of the system are the building blocks which are laid in bonded patterns using an intelligent snap lock system, and give the overall system its structural rigidity.

The modular ACO Stormbrixx infiltration system reduces transport costs and therefore more than halves CO<sub>2</sub> consumption and the storage space required in storerooms and on the construction site compared to other systems.

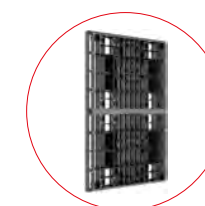
- Height of 1 layer: 914 mm
- Basic elements/m<sup>3</sup>: 3
- Volume/basic element: 319 l
- Storage coefficient: 97 %
- Min. cover depth: 0.8 m
- Max. cover depth: 2.0 m
- Tested by MFPA Leipzig



Recyclable polypropylene material provides a robust and corrosion-resistant basis for a long-lasting infiltration system. The basic elements form a loadable structure.



Basic elements can be cut in half to allow integration into the overall system.



Side panel perimeters for the entire system offer a sound base for laying the geotextile wrapper.



The pillars are also filled with storm water. Small openings at the base of the pillars optimise water treatment in the product.



Thanks to the open structure of ACO Stormbrixx, inspection cameras and cleaning devices can have free passage through the system.

FEEL SAFE WITH US  
**50 YEARS**



ACO Stormbrixx  
installation video





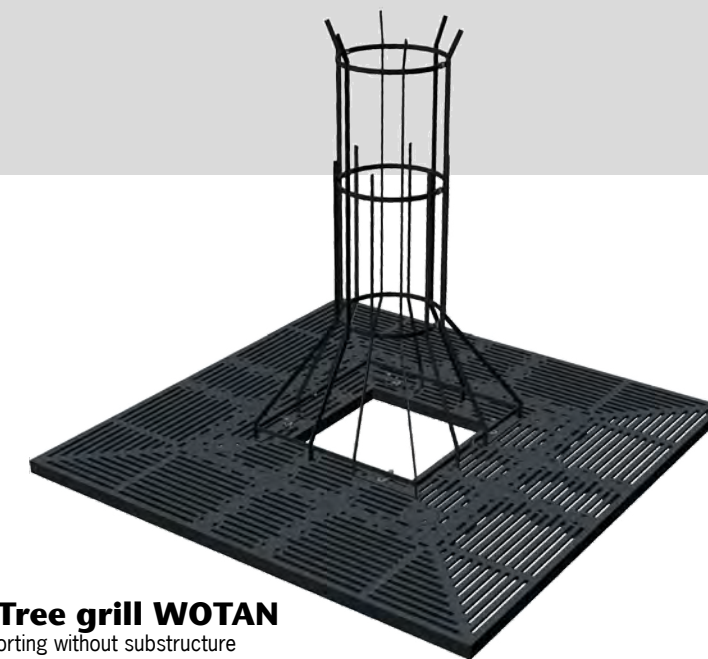
## ACO Wotan & ACO Standart

Tree protection grills

### Product overview

With the tree protection systems WOTAN and Standard ACO fulfills all technical requirements and offers optimal security in the living area of trees in urban areas. Healthy green and good looks: both objectives are optimally achieved with the ACO tree protection systems. The protection grates protect the roots from compression. An adequate oxygen supply as well as ventilation of the root area is fully ensured. Through different design variants or by the installation of ground lights in the tree guard the freedom of design has no limits.

- Different designs
- High variability in shape and size
- Sizes over 4.0 m possible
- Self-supporting without substructure
- Low construction height (6 cm)
- Inner diameter adaptable after the trunk circumference of the tree
- Load capacity up to 50 kN, SLW 30
- Openings for ACO light point possible
- Tree guards available



**ACO Tree grill WOTAN**  
self-supporting without substructure



**ACO Tree grill Standart**  
self-supporting with steel substructure





## ACO Uniface cover

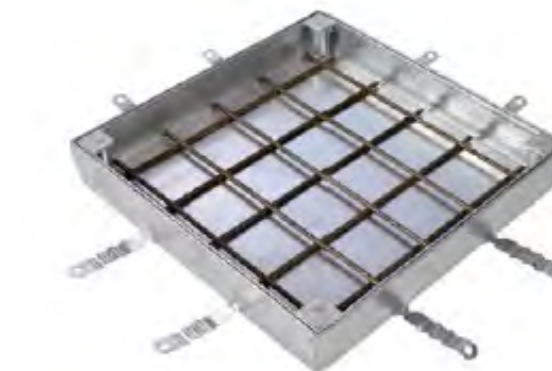
### Outdoor access covers

#### Product overview

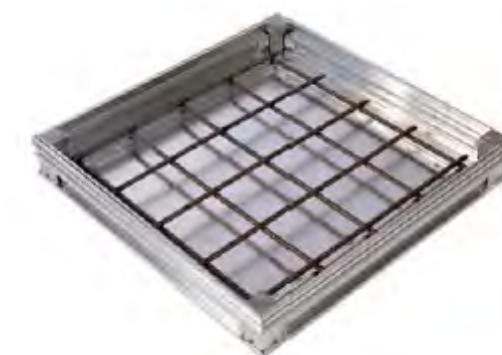
ACO access covers are a range of high quality access covers which, whilst providing quick and easy access to underground services, enable decorative floor finishes to be maintained with minimal interference. ACO Access Covers are innovative and made of high quality materials. Our complete range of covers is fully certified according to European standards and meets all load, safety and functional requirements.

- Type tested and certified according to
- EN 1253-4.
- Tested with space for tiles 15 mm
- (competitors covers tested completely filled with concrete)
- Bolt locked – child safety
- Corrosion resistant
- Small corner parts
- Secure installation – good connection with concrete (profiled frame or anchors)
- Discreet product after installation
- Easy tool for opening and manipulation
- Water-tight and odour-tight

#### ACO Uniface Stainless Steel



#### ACO Uniface Alluminuim







Roof Terrace & Facade  
Kitchen  
Bathroom  
Entrance & Lobby  
Spa & Pool  
Basement  
Parking  
Garden&Landscaping

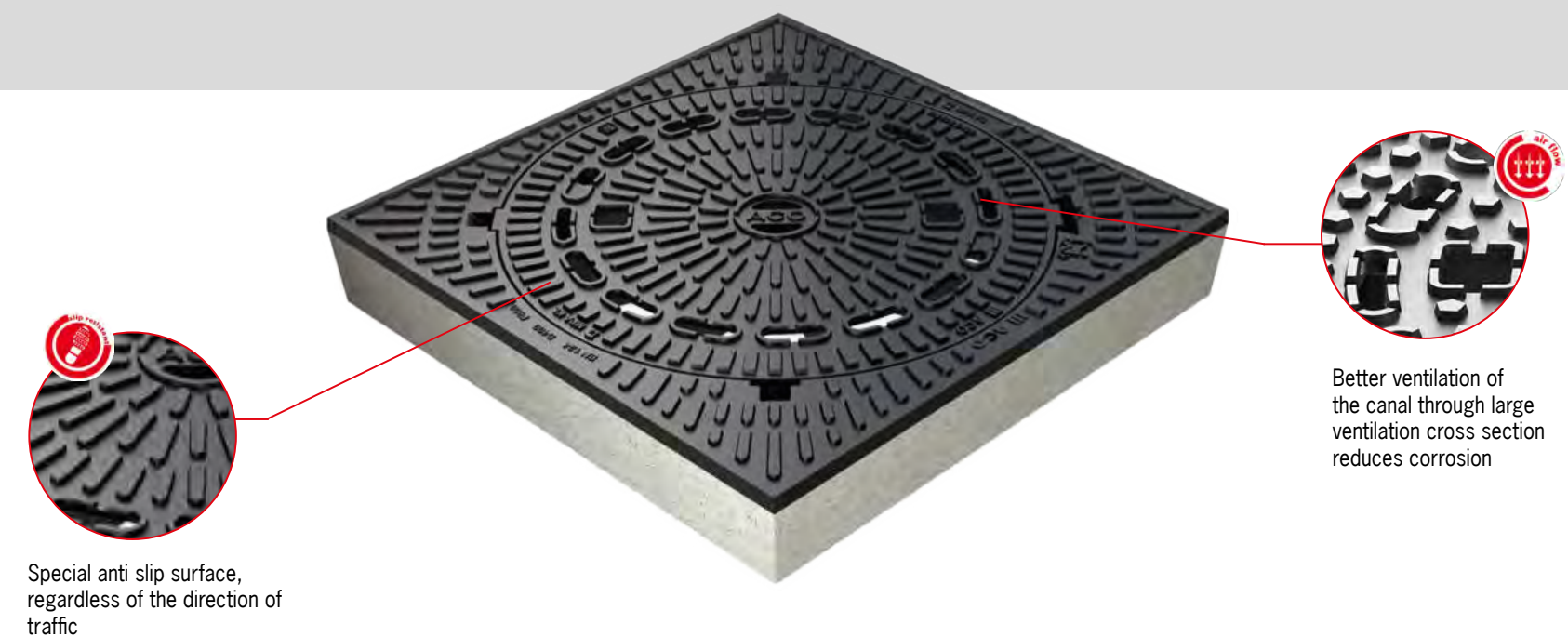
## ACO Multitop

### Manhole covers

#### Product overview

The innovative ACO Multitop system is developed to comply with the modern challenges of drivable areas. The intelligent structure of the components allows the distribution of the dynamic load from the traffic, which guarantees that the cover remains at the same level as the road surface. The flat surface of the installation guarantees safety and comfort for vehicles and passengers.

- Durable and cost-effective solution, 10 year guarantee
- Flat surface – safety and comfort for vehicles and passengers
- Secret bolt locking against vandalism
- Soundproofing sealing in the frame
- Anti slip surface of the cover
- Inscription of a logo on the cover surface



Special anti slip surface,  
regardless of the direction of  
traffic

Better ventilation of  
the canal through large  
ventilation cross section  
reduces corrosion





# ACO Gully

## Point drainage

### Product overview

ACO Gully offers point drainage of external areas. The solid cast iron grating allows pedestrian and automotive traffic, as well as reliable locking. This system can be installed in a few steps and meets the highest requirements in terms of processing and design. The cover can only be opened with the aid of a tool and is ideal for use in public areas. A filter bag is available for connection to a pipe infiltration so the water is purified and led into the infiltration.

- Load class B 125 DIN EN 124
- Vandalism- and theft-proof due to the screwless locking Pointlock
- Extremely low component weight compared to conventional concrete products
- Optionally with cast iron grating (EN-GJS) or mesh grating (mesh size: 32 x 10) with integrated, screw-less Pointlock locking system
- With odor trap and bucket made of plastic

Roof Terrace & Facade  
Kitchen  
Bathroom  
Entrance & Lobby  
Spa & Pool  
Basement  
Parking  
Garden&Landscaping



Gully made of polymer concrete with cast iron grating and frame (EN-GJS)



Gully made of polymer concrete with mesh gratingMaschenrost (galvanized steel MW 32x10 mm) cast iron frame



Top element made of polymer concrete for additional height adjustment, DN/OD 110 pipe outlet connection



Polymer concrete compensating element for adjusting the height of the surface covering