

ACO Solutions for Hotels and Resorts

Helping create signature hotels worldwide



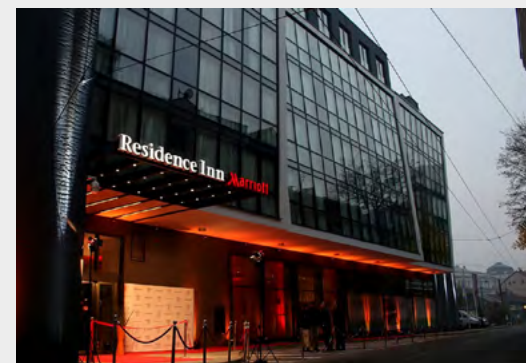
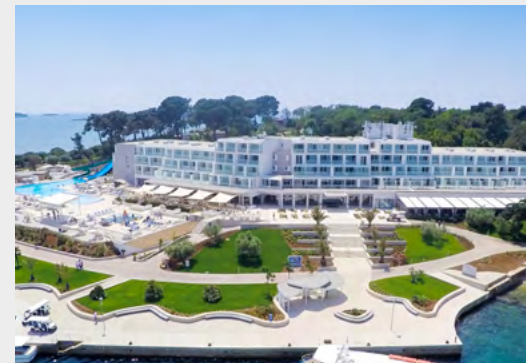
Follow us on Facebook



Follow us on YouTube



Experience worldwide





Westin Hotel Hamburg

Location: Hamburg, Germany

Architect: Herzog & de Meuron

Year of construction: 2016

ACO Products

- ACO SlotDrain
- ACO PowerDrain
- ACO SK



ACO Solution

The 5-star Westin hotel in Hamburg hosts 244 exclusive design rooms under the roof of the Elbphilharmonie - one of the most bold buildings in the city with impressive contemporary architecture. ACO supported the project with complete solution for surface water management of the facade and landscaping around the building.





Intercontinental Ljubljana

Location: Ljubljana, Slovenia

Architect: OFIS ARHITEKTI d.o.o

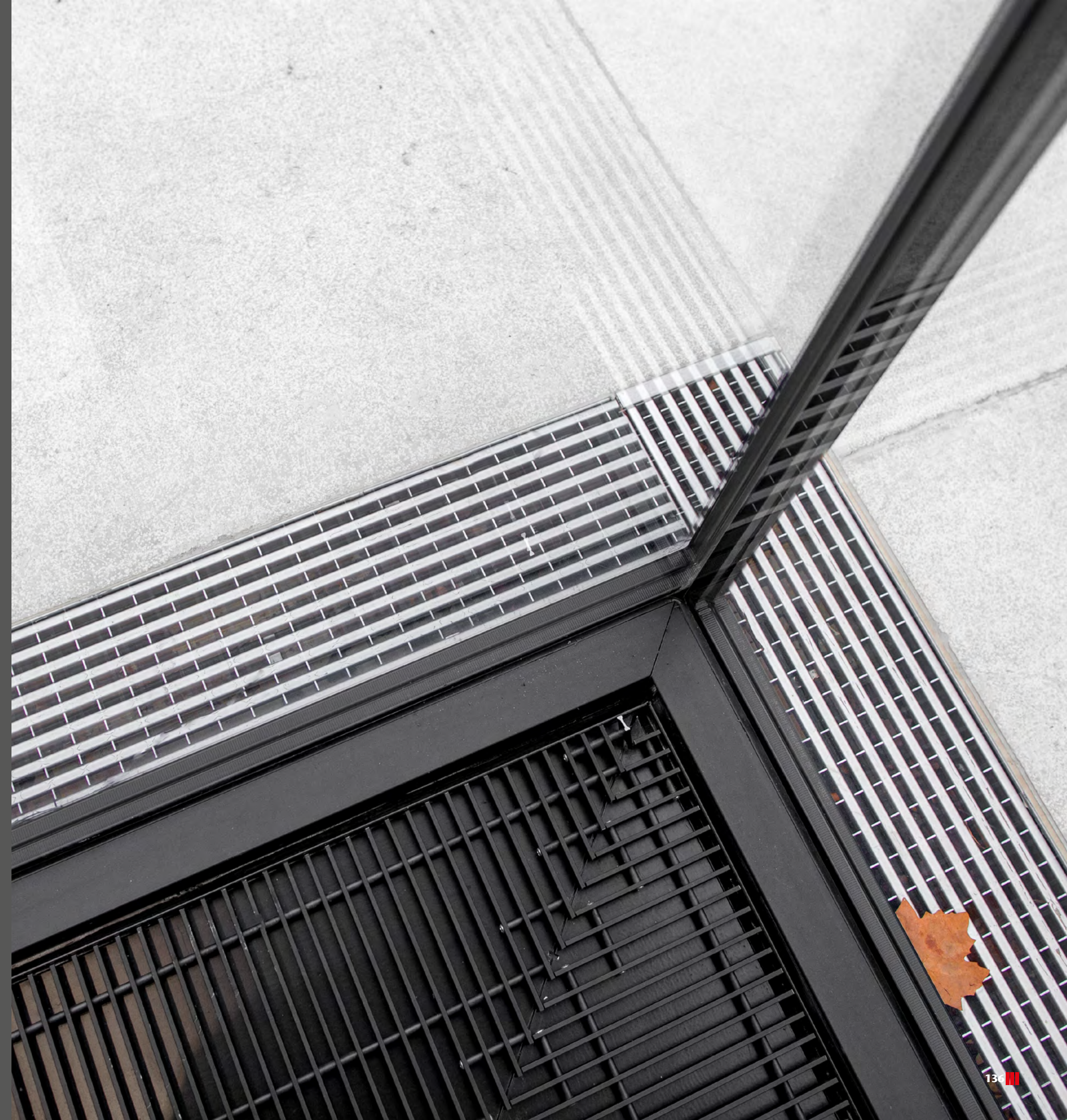
Year of construction: 2017

ACO Products

- ACO MultiDrain - line drainage with design gratings
- ACO Monoblock – monolithic drainage channels
- ACO Modular stainless steel channels
- ACO Passavant roof gullies made of cast iron
- ACO Easyflow gullies
- ACO Box channels – stainless steel hygienic drainage
- ACO Hydrojet RAE free-standing grease separator
- ACO Multi-PRO-PE-K pump
- ACO Lipumax P-DA grease separator

ACO Solution

Line drainage of the façade and the surrounding areas is executed with ACO MultiDrain. The Red Dot Design and IF award winning grating is made of stainless steel and contributes to the aesthetic appearance of the architecture. At the same time optimal drainage and comfort for pedestrians is provided.





Sense Design Hotel

Location: Bulgaria, Sofia

Architect: Architecture Group Tsonkov

Arch. Simeon Tsonkov

Investor: George Chohev, BLVD Ltd.

Year of construction: 2013

ACO Products

- ACO ShowerDrain



ACO Solution

Sense Design Hotel is located in the very heart of Sofia city, just a few steps from the parliament and the landmark cathedral. It was opened in 2013 when an existing classic residential building was redesigned into a contemporary hotel. The project required compliance with existing pipework of the building. ACO Design team supported the projects with individual measuring of every single shower area and delivering custom made channels. The architect's preference was using ACO ShowerDrain with integrated tile in the cover, in order to achieve visually uninterrupted surface.





Radisson Blu Old Mill Hotel

Location: Serbia, Belgrade

Architect: Graft Architects

Investor: Soravia

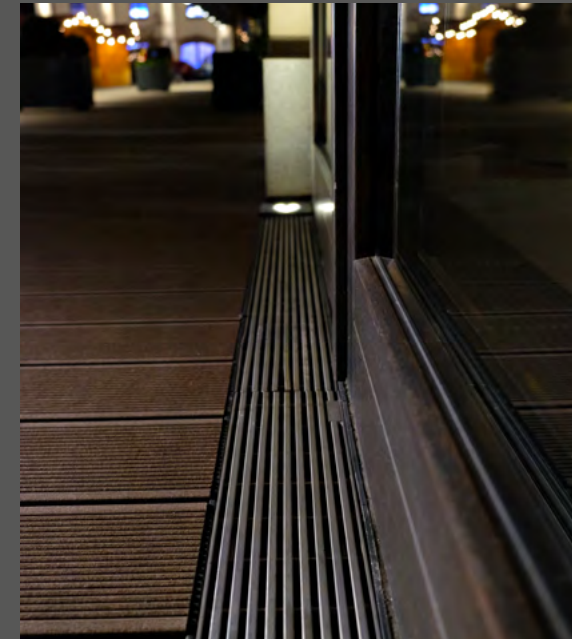
Year of construction: 2015

ACO Products

- ACO Profiline - façade drainage
- ACO ShowerDrain
- ACO Stainless steel gullies
- ACO Stainless steel tray channels
- ACO Uniface - access covers
- ACO MultiDrain - line drainage
- ACO XtraDrain - line drainage
- ACO cast iron gully

ACO Solution

An ambitious project of turning the historic “Old Mill” building into a 4 star hotel overlooking the Sava river and centre of Belgrade. Graft Architects have successfully combined the traditional architecture of the existing building, with new materials and modern interior concept, creating a unique experience. The façade with original bricks from the Old Mill was saved intact and merged amazingly well with the modern interior style. In such a concept, ACO products have found the wide use in all the aspects of water management: Bath, Kitchen, Façade, Piazza, Garage, Parking. In such a design, combination of functionality and aesthetics of products was highly required. High quality ACO products with their discreet design were chosen by the architects and proved their value during installation and maintenance.





Intercontinental

Location: Sofia, Bulgaria

Architect: arh. Hristo Kovachev

Year of reconstruction: 2017

ACO Products

- ACO ShowerDrain - line drainage for bathrooms
- ACO MultiDrain - line drainage



ACO Solution

The iconic hotel facing the parliament building in Sofia, Bulgaria was recently acquired by the Intercontinental chain of hotels. Overlooking Narodno Sabranie Square and offering stunning views of Alexander Nevski Cathedral, InterContinental Sofia is the capital's ultimate luxury hotel.

During the renovation of the hotel, ACO supplied high quality line drainage system for the bathrooms. Each solution was chosen in compliance with the design of the bathrooms and the specific needs for installation.





Hotel Eurostar

Location: Madrid, Spain

Architect: R&AS, Carlos Rubio & Enrique Álvarez-Sala

Year of construction: 2008

ACO Products

- ACO MultiDrain



ACO Solutions

The Eurostars Madrid Tower - an acclaimed, prestigious hotel created for clients who love exclusivity. The height makes us unique: the Eurostars Madrid Tower occupies the first 31 floors of the imposing 236-metre-tall SyV Tower.

The SyV Tower was designed by the prestigious architecture studio R&AS run by Carlos Rubio and Enrique Álvarez-Sala and is part of the latest architectural, urban planning and business symbol of Madrid, the Cuatro Torres Business Area. The area around the skyscraper is drained with ACO MultiDrain with cast iron grating.



Falkensteiner Hotel

Location: Serbia, Belgrade

Architect: Atelier Podrecca (Boris Podrecca)

Investor: Alba Invest

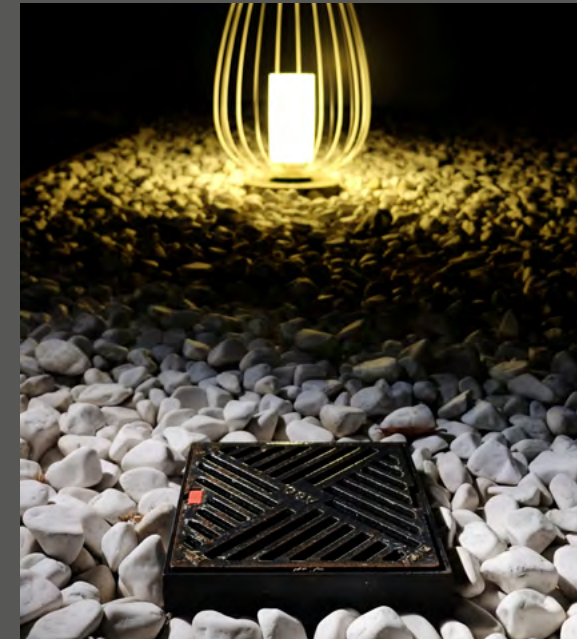
Year of construction: 2013

ACO Products

- ACO BrickSlot façade drainage
- ACO Hydrojet OA NG 10 grease separator
- ACO Multi-Star DDP lifting station
- ACO ECO Mobil grease separator
- ACO MultiDrain – line drainage
- ACO Coalisator GG oil separator
- ACO cast iron gully

ACO Solution

Modern 4 star hotel, placed in the business centre of Belgrade, designed by an international star architect Boris Podrecca. Wide application of ACO products has helped the functionality of the hotel, especially with grease separation from the kitchen, where ACO fought to prove the importance of fully automated separators in such applications. The aesthetics feature which was important for the architect, was brought by ACO BrickSlot channels to drain the façade and Multiline channels in the surrounding areas.





Meydan Hotel and Racecourse

Location: United Arab Emirates, Dubai

Architect: Teoh A Khing

Year of construction: 2013

ACO Products

- ACO Shower Drain
- ACO Box channels with mesh gratings
- ACO Modular channels with mesh gratings
- ACO Access covers
- ACO MultiDrain
- ACO SlotDrain

ACO Solution

The 7.5 million sq. m Meydan Racecourse includes Meydan Marina, The Meydan the world's first 5-star trackside hotel with 285 rooms, 2 race tracks and the Grandstand, which comprises a hotel, restaurants, a racing museum and 72 corporate suites. ACO supported the project with drainage solutions for the landscaping area. High quality hygienic channels were installed in the kitchens.





Agaoglu Maslak Aparthotel

Location: Istanbul, Turkey

Architect: Agaoglu Maslak 1453 Design Team

Year of construction: 2017

ACO Products

- ACO SlotDrain
- ACO MultiDrain
- ACO Stainless steel gullies
- ACO Spin roof gullies
- ACO Access covers
- ACO KerbDrain



ACO Solution

The project Agaoglu Maslak 1453 in Istanbul includes residential area, landscaping and aparthotel. ACO Design team supports the project with hydraulic calculations and product selection. Various types of line drainage systems are installed, depending on the specific requirements of each area - including channels with gratings, slot channels and kerbs with integrated drainage.





Marriott Hotel

Location: Skopje, Macedonia

Architect: Develop Group

Year of construction: 2013

ACO Products:

- ACO ShowerDrain
- ACO ExtraDrain
- ACO Lipumax
- ACO Euroline Supermini
- ACO Spin roof drainage

ACO Solution

Marriott hotel in Skopje offers stylish accommodation, friendly service and convenient city centre location. The sophisticated rooms and suits feature scenic views to Macedonia square. ACO supported the reconstruction of the hotel with solutions for external drainage of pedestrian areas around the building, cast iron road gullies, grease separation system for the kitchen and design line drainage for the shower areas in the bathrooms of the hotel.





DC Tower Hotel Melia

Location: Vienna, Austria

Architect: Dominique Perrault und Hoffmann-Janz Architekten

Year of construction: 2013

ACO Products

- ACO Profiline - bespoke stainless steel channels

ACO Solution

Since 2013, the DC Tower 1 has impressively shaped the cityscape of Vienna. The 250-meter-high tower by the French star architect Dominique Perrault is currently the tallest building in Austria.

To meet the demands of the architecture, ACO Profiline channels made of the highest quality V4A stainless steel were manufactured to fit the individual demand of this outstanding project. All channels were dimensioned according to the expected amount of water to protect the building structure and drain the stormwater.

As a sophisticated detail, the facade raises above the skyterrace as a windbreak. As a result, the facade needs drainage on the outer and in addition on the inner side. All channels (more than 600m in total) were produced individually, as the needed to fit around the pillars of the irregular facade construction.

On the ground floor very wide and deep channels run along the facade around the entire building. Another major challenge was to generate a persistent appearance of the longitudinal stainless steel gratings overcoming widths of partly more than 70cm.





Novotel Sofia Hotel

Location: Sofia, Bulgaria

Architect: Markan Project

Year of construction: 2009

ACO Products

- ACO MultiDrain - line drainage
- ACO Cast iron gullies

ACO Solution

This new 4-star business hotel provides latest generation rooms and meeting rooms with state-of-the-art equipment in Sofia's main business district. The close location of the airport and the and views of the city or Vitosha Mountain, it is a pleasure to do business at Novotel.

ACO was involved in the construction of the hotel for delivering high quality drainage systems for the underground parking.





Regent Porto Montenegro

Location: Tivat, Montenegro

Architect: ReardonSmith Architects, London

Investor: Adriatic Marinas

Year of construction: 2014

ACO Products

- ACO Self Euromini with Heelsafe stainless steel grating
- ACO Hexaline Slot
- ACO Cast iron gullies
- ACO Showerdrain E custom made
- ACO HydroJet OA
- ACO MultiDrain
- ACO Combipoint gullies
- ACO BrickSlot
- ACO Access covers

ACO Solution

Regent Porto Montenegro is a luxury 5 star hotel, situated in the Boka Kotorska bay of the Adriatic Coast in Montenegro.

This glamorous retreat was designed by London-based ReardonSmith architects, inspired by the Venetian-style palazzi that dominate the Adriatic coast.

Parisian designer Tino Zervudachi created the graceful interiors which blend perfectly with the arched colonnade and ample terraces of the exterior.

ACO provided complete drainage solutions for the external area, garage, entrance, terrace and balcony as well as custom made ShowerDrain which blended nicely with the exclusive stone design of the bathroom area. Functionality of the kitchen is enhanced by the ACO HydroJet grease separators. Discrete design of numerous ACO TopTek access covers ensured the unique surface design.





Raffles Hotel

Location: Istanbul, Turkey

Architect: Emre Arolat Architects

Year of construction: 2013

ACO Products

- ACO SlotDrain
- ACO MultiDrain
- ACO Hygienic Box channels
- ACO Easyflow
- ACO ShowerDrain



ACO Solution

Raffles hotel is located in Zorlu Center - multiple-use complex on the European side of Istanbul. The center is a four-tower, five-function structure group, including a public square, residential development and office space. On the main pedestrian areas it has been used brickslot design gratings. On the kitchen areas stainless steel box channels has been preferred to provide the highest standards.





Sheraton Hotel Balkan

Location: Sofia, Bulgaria

Architect: BATES

Year of reconstruction: 2017

ACO Products

- ACO ShowerDrain
- ACO Bath gullies



ACO Solution

Sheraton Hotel Balkan was built in 1956 as part of a new architectural trend: a fusion of classical design and lavish décor, redefining the concept of space. The iconic building of Sofia Hotel Balkan is part of the President's Palace complex and beneath its foundations lies a historical Roman fortress, the remains of which can be seen all around the hotel. As part of the reconstruction of the hotel in 2017 ACO delivers high quality drainage systems for the bathrooms in the hotel.





HolidayInn

Location: Plovdiv, Bulgaria

Architect: RT Consult

Year of construction: 2015

ACO Products

- ACO ShowerDrain - design bath drainage
- ACO Uniface covers - access covers
- ACO Mats - shoescrapers
- ACO Monoblock PD - monolithic line drainage



ACO Solution

HolidayInn is a newly built hotel in the heart of Plovdiv, offering stylish business accommodation and close location to the old town and the ancient ruins of the city. ACO was involved in the project for providing solutions for the bathrooms, spa area, as well as the complete surface water management around the hotel.



Crowne Plaza Hotel

Location: Serbia, Belgrade

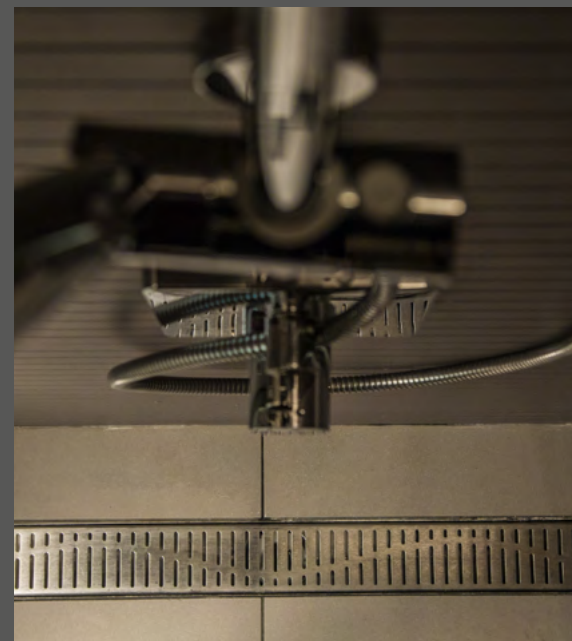
Architect: Virgile and Stone, London

Investor: Delta Holding

Year of construction: 2013

ACO Products

- ACO stainless steel roof gullies
- ACO cast iron roof gullies
- ACO ShowerDrain – bath drainage
- ACO Lipurat OAE NG 7 grease separator
- ACO Stainless Steel Tray Channels
- ACO Stainless steel gully
- ACO Wal-Selecta cast iron gullies
- ACO EG 150 gully



ACO Solution

Located in the New Belgrade business town centre, a 4 star hotel Crowne Plaza with 387 rooms and 29 suites, 14 conference rooms and various restaurants and bars, is the city's largest hotel. Completely renovated, previously owned by the Intercontinental Chain, this hotel has a rich history of famous guests residing in presidential suites. ACO was proud to become part of such tradition and offer reliable products and solutions for various applications, like bathrooms, spa, kitchen and roof. ACO Showerdrain E channels were installed in 350 rooms and contributed to their functionality and design. Kitchen drainage and grease separation solutions provided by ACO, largely enhanced the safety and functionality of the food and kitchen operations.





Conrad

Location: Dubai

Architect: Arkins

Year of construction: 2013

ACO Products

- ACO ShowerDrain
- ACO MultiDrain
- ACO Box channels
- ACO Stainless steel gullies

ACO Solution

Located along Sheikh Zayed Road in Dubai, Conrad Dubai is a prestigious mixed use project comprising a luxurious Conrad and premium office space. This 250 M tall landmark tower occupies second to the fourth floor with Grand Ballroom and Ballroom, sixth floor and Mezzanine for Conrad Spa, fine dining restaurants, leisure and meeting facilities, and 24th floor is the Executive Lounge. ACO supports the design and construction of the hotel with solutions for surface water management, as well as internal drainage solutions for the kitchen and the bathrooms.





Lone Hotel

Location: Rovinj, Croatia

Architect: Studio 3LHD

Year of construction: 2011

ACO Products

- ACO SlotDrain – slot line drainage
- ACO MultiDrain – line drainage with design gratings
- ACO Stainless steel channels
- ACO ShowerDrain
- ACO Uniface – access covers
- ACO Spin roof gullies
- ACO Multitop – manhole covers
- ACO OLEOPATOR C – oil separator
- ACO HYDROJET OAE – grease separator
- ACO MULI PE duo AIR - pump

ACO Solution

The first design hotel in Croatia is created by Studio 3LHD from Zagreb. They engage young Croatian designers for the interior design and equipment of the hotel. The cooperation results in the overall visual identity of the hotel with special focus on design features and elements. ACO Design Team supports the planning process with solutions for different areas in the hotel – both interior and landscaping. The ACO SlotDrain line drainage solution is preferred for the outside area because of its discreet opening which does not disturb the surface. The ACO ShowerDrain bath drainage attracted the designers with its aesthetic look and functional features.





Aquahouse Thermal & Beach

Location: St. St. Constantine & Elena, Bulgaria

Architect: STARH, Svetoslav Stanislavov

Investor: St.St. Constantine & Elena Holding

Year of construction: 2018

ACO Products

- ShowerDrain E+
- ShowerDrain C



ACO Solution

Aquahouse Thermal & Spa offers 4 season spa experience by the seaside thanks to the unique combination of sea and thermal water. The complex features 14 pools with different possibilities for treatments and activities.

ACO supported the project with design solutions for drainage of bathrooms and Spa areas, as well as landscaping solutions.





Hotel D-Resort Šibenik

Location: Croatia, Šibenik – Mandalina peninsula

Architect: Nikola Bašić (exterior), Marko Murtić (interior)

Investor: Dogus Holding

Year of construction: 2015

ACO Products

- ACO Lipumax- C - grease separator
- ACO MutliDrain - line drainage
- ACO SlotDrain - slot drainage
- Oleopator- C - oil separator
- ACO Board - grass grid
- ACO Uniface - access covers

ACO Solution

Located in D-Marin Mandalina, the award-winning marina for mega yachts, D-Resort Šibenik is a spectacular design hotel. Thanks to its excellent position, it offers everything you would expect from a vacation by the sea, and the beauty of Šibenik is within easy reach. ACO is present on its project with its wastewater treatment solutions and surface drainage.





Hotel Monte Mulini

Location: Croatia, Rovinj

Architect: Wimberly Allison Tong & Goo

Investor: Maistra d.d.

Year of construction: 2007/8

ACO Products

- ACO ShowerDrain – bath drainage
- ACO Hydrojet – grease separator
- ACO MultiDrain with cast iron grating – line drainage
- ACO MultiDrain with stainless steel grating – line drainage
- ACO Board – grass grid

ACO Solution

Hotel Monte Mulini is exclusive 5 star boutique hotel opened in March 2009. The architecture and design of the hotel, which in spite of modernity fits in with nature, is signed by the WATG - Wimberly Allison Tong & Goo architectural studio. The hotel is part of a protected park called Zlatni rt, right by the sea on the southern shore of Monte Mulini Hill, a few minutes' walk along the coast from the center of Rovinj. ACOs share in creating this luxury hotel was providing top drainage solutions on driveway and reception area in front of the hotel with Multiline channels with Guss gratings, ACO Multiline channels with stainless steel gratings and Areal grass grids on lawn surfaces around the pool, all rooms and suites have ACO ShowerDrain channels in their bathrooms, and kitchen is equipped with ACO Hydrojet grease separator.





Valamar Isabella Island Resort

Location: Croatia, Poreč (St. Nikola Island)

Architect: Mirna Malnar d.i.arh. (Anton d.o.o.)

Investor: Valamar Riviera d.d. Poreč

Year of construction: 2015

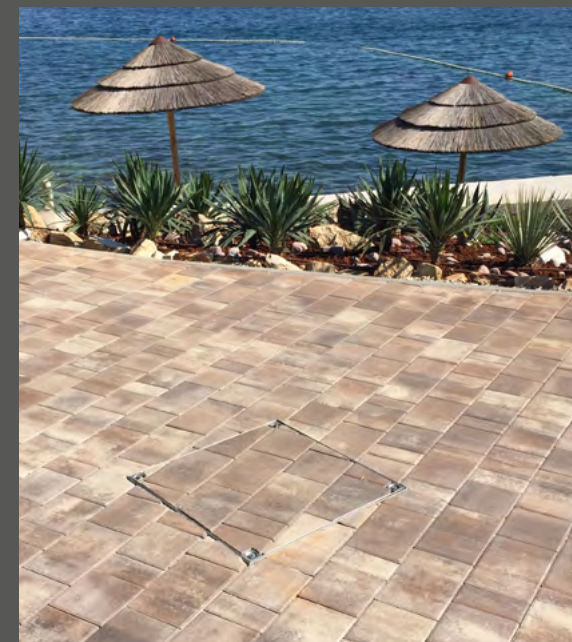
ACO Products

- ACO MultiDrain – line drainage
- ACO SK – line drainage
- ACO Euroline Brickslot – slot drainage
- ACO Uniface – access covers
- ACO Uniface – access covers

ACO Solution

Opened in June 2015, Valamar Riviera's luxurious family resort Valamar Isabella Island Resort sits on the island of Sveti Nikola opposite Poreč town. Surface drainage is efficiently solved by the ACO Brickslot system with narrow, decent absorbing grids that blend into the environment by following the facility's lines.

In the prominent position of the pool sunbath and access to the surface drainage, it is emphasized by the ACO Multiline canal with a perforated grating that with its high-gloss stainless steel surface emphasized the luxury of the building itself.





Radisson Blu Resort

Location: Poland, Świnoujście

Architect: Multiselect Zygmunt Baryła

Investor: Radisson Blu Resort

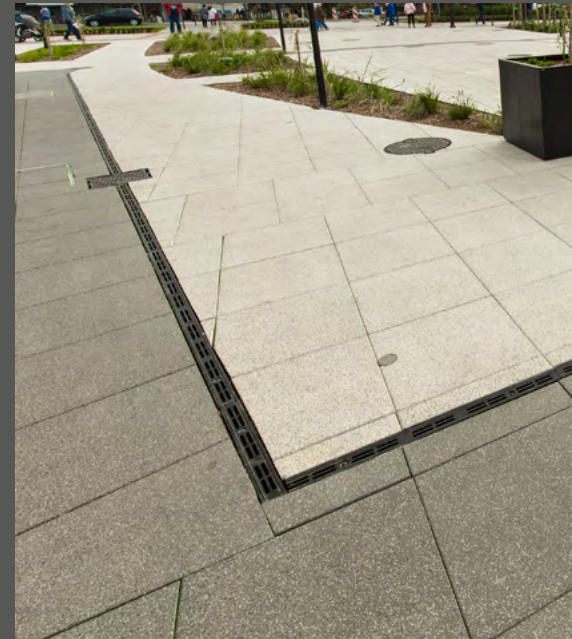
Year of construction: 2017

ACO Products

- ACO Multiline V150S
- ACO Multiline V200S
- ACO Qmax® 225
- ACO SlotTop
- ACO XtraDrain NW 100
- ACO XtraDrain X100C
- ACO Coalisator Oleopator K-PE

ACO Solution

The grand Radisson Blu Resort Hotel in Świnoujście, Poland hotel offers stylish and comfortable accommodation on the sparkling Baltic Sea. ACO supports the projects with complete system solution for surface water management. The design team supported the project hydraulic calculations and complete line drainage system, including channels with gratings, slots and high capacity channels to fit the specific requirements of the different areas surrounding the hotel..





Hotel Bellevue

Location: Lošinj, Croatia

Architect: Andrija Rusan

Year of construction: 2014

ACO Products

- ACO Spin for green roof- gravity roof drainage
- ACO Stainless steel channels
- ACO Stainless steel hygienic gullies
- LIPU-Mobil - mobile grease separator
- ACO Uniface ALU
- ACO Uniface SS
- ACO SK
- ACO MultiDrain
- ACO XtraDrain
- Oleopator-C - grease separator
- ACO Stormbrixx - infiltration system

ACO Solution

The renovation of Bellevue Hotel requires complete redesign of surface water management, which includes creating a modern and sustainable system, having in mind increased capacity of the building and also the raise in precipitation volumes in the area. The project involves a comprehensive range of products inside the building – including kitchen and roof drainage. A system solution for rainwater collection, treatment and infiltration system was designed with special focus was put on sustainability, environmental protection and long-term reliability.





Premier Fort Beach

Location: Sunny beach, Bulgaria

Architect: arch. Vasil Bonev

Year of construction: 2015

ACO Products

- ACO Stainless steel Box Channel
- ACO EG 1 gullies
- ACO Stainless steel Slot Channel
- ACO Uniface covers
- ACO Uniface covers
- ACO Mat shoescrapers
- ACO Euroline line drainage



ACO Solution

Premier Apart Hotel is situated right on the beach with two fresh water swimming pools and a children's swimming pool. ACO supports the project with a complete solution for water management in the kitchen, as well as access covers with intergated pavement inside and outside of the hotel. The drainage of the landscaping area of the hotel is provided by ACO Euroline drainage channels with composite graings.





Amarin

Location: Rovinj, Croatia

Architect: Studio UP

Year of construction: 2017

ACO Products

- ACO MultiDrain - line drainage with design gratings
- ACO Monoblock - monolithic drainage channels
- ACO Uniface covers - access covers
- ACO FHD Gully - point drainage
- ACO ShowerDrain - design bath drainage
- ACO Self XtraDrain - line drainage
- ACO Self Hexaline - line drainage for pedestrian areas
- ACO Box hygienic channel
- ACO Lipumax - grease separator
- ACO Lipumax-P - grease separator

ACO Solution

Family Hotel Amarin is located in a thick pine forest, on the eastern edge of the Monsena-Valdaliso area, on a peninsula with views of Rovinj, Venice and Figarola Island.

This hotel is rightfully named "family" due to 280 accommodation units mostly interconnected by doors, offering a magnificent view of the Adriatic sea and the old town center of Rovinj, which is only a couple of minutes' drive away. The pebbly and rocky beach below the hotel is one kilometer long, but most guests are bound to choose one of the seven attractive pools or the lazy river for their swim. A 1,500 square-meter wellness and spa zone and six catering establishments are also located in the hotel, and besides numerous playgrounds and playrooms, the hotel also has the original Amarin Kids program, developed in collaboration with a team of top child psychologists. A truly ideal place for a carefree family holiday with style, from which boredom is strictly banned.





Bor

Location: Sunny beach, Bulgaria

Architect: Arch View Gradinarska

Year of construction: 2015

ACO Products

- ACO Stainless steel Box Channel
- ACO EG 1gullies
- ACO Stainless steel Slot Channel
- ACO ECO Mobil
- ACO Uniface covers
- ACO Uniface covers

ACO Solution

The reconstruction of the hotel includes modernization of the Spa & Pool area, as well as the interior of the hotel and the kitchen facilities. ACO supports the project with high quality drainage and waste water treatment systems for the kitchen area, as well as drainage solutions for the restaurant terrace and landscaping areas. High quality access covers with integrated floor covering are installed both in the interior and exterior of the hotel.





Globetrotter Lodge

Location: Ascheffel, Germany

Architect: Moths Architekten

Year of construction: 2014

ACO Products

- ACO Profiline
- ACO ShowerDrain
- ACO Vario
- ACO Lightshafts

ACO Solution

The Globetrotter Lodge in Ascheffel, Germany offers modern comfort in a natural environment. The hotel building, as well as the 23-meter observation tower feature natural wood lamella facades, teak surfaces, nature motifs on the walls, hardwood floors and floor-to-ceiling windows in front of the generous wooden terrace. ACO supported the architect to ensure the drainage of surfaces, considering the special requirements of the project. Based on detailed hydraulic calculations, the size and structure of the catchment areas and the expected rainfall intensity - the complete drainage layout was designed. In addition to the facade drainage, the system solution was completed with bathroom drainage, lightshafts and shoescapers.





Zámek Valeč

Location: Czech Republic, Valeč

Investor: V-Stav

Year of construction: 2014-2017

ACO Products

- ACO ShowerDrain C
- ACO Hygienic modular channel, gully -125
- ACO Slot channels - 8 mm
- ACO MultiDrain

ACO Solution

The design project involved reviving the Renaissance chateau into a modern wellness hotels. ACO supports the project with custom made stainless steel channels for the pool as well as design shower drainage of the spa and the baths. Besides the drainage in the interior of the hotel, the outside area, including the parking lot and the landscaping have line drainage ACO MultiDrain installed.





Hotel Krasicki

Location: Poland, Lidzbark Warmiński

Architect: AMCO Olsztyn

Investor: Hotel Krasicki

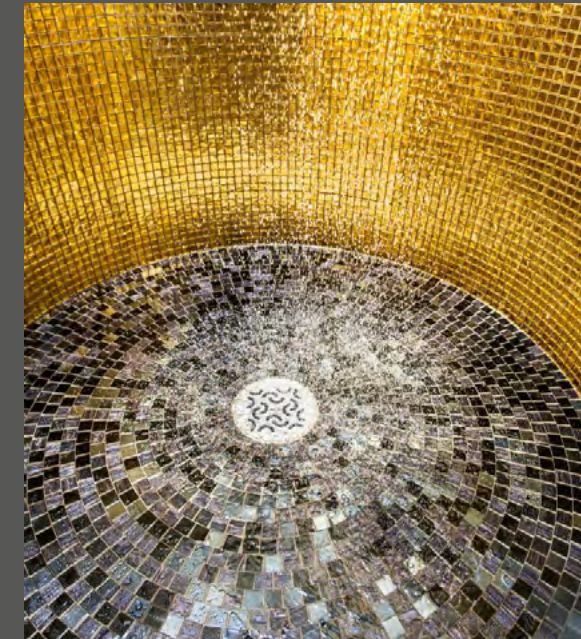
Year of construction: 2011

ACO Products

- ACO ShowerDrain E
- ACO XtraDrain X100C
- ACO Easyflow

ACO Solution

Set in a redbrick waterfront mansion, this stately hotel is next to the 14th-century Olsztyn Castle. Formerly a bishop residence, the building is redesigned into an artistic modern spa hotel. Natural stone in bathrooms and spa area is highlighted with ACO ShowerDrain channels and design gullies. Line drainage ACO XtraDrain is installed in the external area around the hotel.





Kempinski Grand Arena

Location: Bansko, Bulgaria

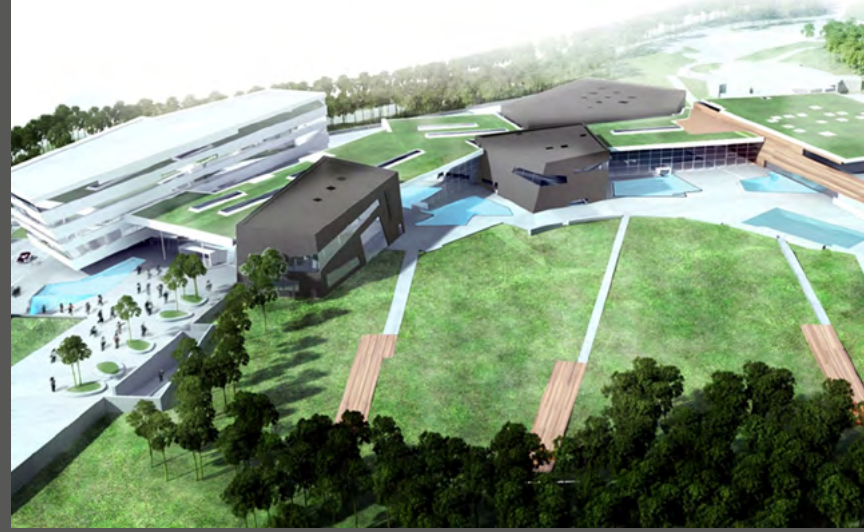
Architect: Arca Studio

Year of construction: 2005

ACO Products

- ACO Uniface - access covers
- ACO XtraDrain - line drainage





Therme Oberlaa

Location: Vienna, Austria

Architect: 4a Architekten

Year of construction: 2010

ACO Products

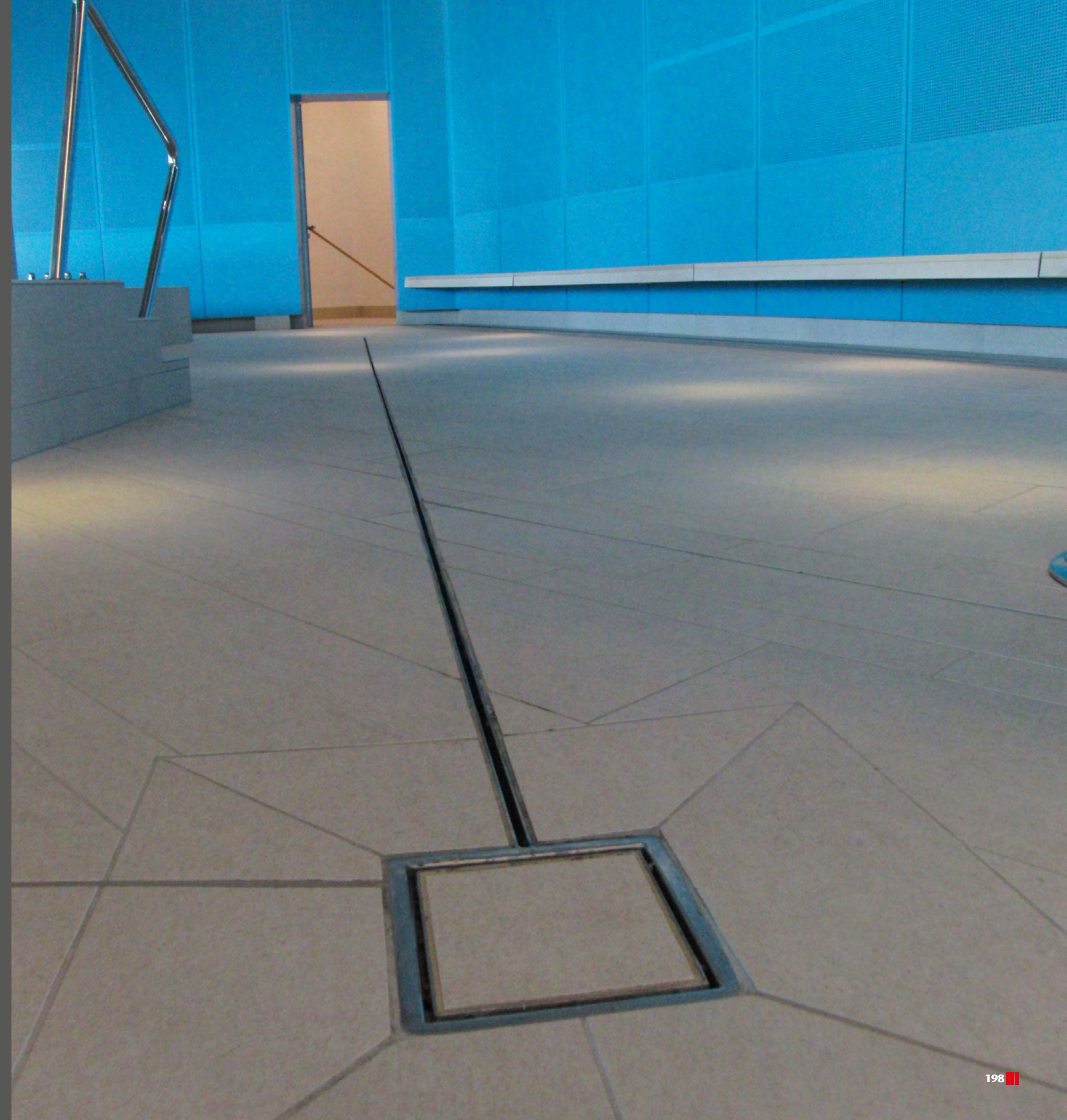
- ACO Slot channels
- ACO Floor gullies
- ACO ShowerDrain

ACO Solution

Only three impressive numbers give a first clear impression of a gigantic recreation area right in Vienna: 26 different pools, 24 different sauna types and a capacity of up to 6.000 guests per day. Besides recreation in huge dimensions, architecture and design played a major role when Therme Oberlaa was built and finally opened its doors in autumn 2010.

For safe operation, drainage is a key element to consider. Especially in areas where people walk barefoot. ACO slot channels made of stainless steel were chosen as an excellent solution to be in accordance with both safety and aesthetic demands. A narrow slot with still great water intake and very decent optical appearance collects and takes the water to the gully. The gully top was covered with the respective tiles as well to keep the homogenous surface design.

ACO solutions can also be found in the showering areas, where ACO shower channels were installed to keep a barrier free and clean surrounding.





Gazprom complex of hotels and cable ways

Location: Russia, Sochi

Investor: Rosengineering company

Year of construction: 2013

ACO Products

- ACO Multiline V100
- ACO Multiline V150
- ACO Multiline V200



ACO Solution

The complex of hotels and cable ways Gazprom is located on the crest of the south-west extremity of Psekhako ridge at height more 1430m in the Adler in Sochi in Krasnodar region. The hotel complex represents composition of the buildings executed in original motives of modern architecture. The serious surveying works were preceded to deliveries to this object because a seismicity of the area its location makes 9 points, and for climate the raised snow and wind loadings are characteristic. In 2009 specialists of ACO technical department together with the Rosengineering company developed project documentation about installation of drainage systems in the territory of complex. The choice of the drainage ACO Multiline system which became result of work of designers and ACO Russia technical specialists. ACO Multiline system is ideally adapted for changing atmospheric conditions in Sochi.





At the Park Hotel

Location: Baden, Austria

Architect: Roland Nemetz

Year of construction: 2014

ACO Products

- ACO Uniface - access covers



ACO Solution

The At the Park Hotel is based in the historic city center of Baden right next to the enchanting "Kurpark". Since the 1970s it is in the hands of a hoteliers family. Back then it was bought by the grandfather of the current hotel director. When the young generation took over the family business, it was also the right occasion for a complete but gentle renovation.

Utilizing the beauty of the green park areas around the building for the guests was one target. The other one was to keep some decent elements of the past and the family history. It should be a mixture of fine etiquette and familial easiness. The refurbishment was without any doubt a challenging task for the architect – the current hotel directors father. The entrance hall was lowered by one meter, heavy glass panels were installed to open the facade to the park and the nice completely new terrace. The old pool was exchanged by an excellent vinothèque and a lot of artwork and extraordinary carpets found their way into the hotel.

By bringing new technology standards into the hotel, the necessity of "hiding" the access to them underneath the flooring came up. First priority was to keep the homogenous surface design of the precious wooden and tiled floors. This is where ACO was able to contribute with its solution of access covers.





Boutique hotel Chateau Herálec

Location: Herálec, Czech Republic

Investor: Kaspers

Year of reconstruction: 2004

ACO Products

- ACO SK - line drainage
- ACO XtraDrain - line drainage
- ACO Stainless steel bespoke channels



ACO Solution

The walls of Chateau Herálec are dated back to the 13th century. The historic building was owned by different noble families in time. In 2004 it was turned into a luxury spa hotel and has achieved its new dignified existence as a five-star Boutique Hotel & Spa by L'Occitane.

ACO supported the project of reconstruction with delivering solutions for the garden and landscaping areas, as well as custom made drainage for the spa and pool area.





Burj Al Arab

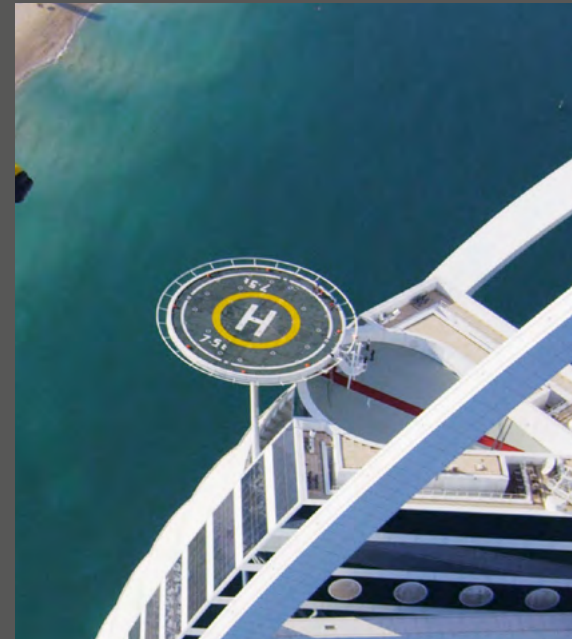
Location: Dubai

Architect: Atkins, lead by Tom Wright

Year of reconstruction: 1999

ACO Products

- ACO Custom drainage solutions for kitchen
- ACO Custom drainage solutions for helicopter landing pad



ACO Solution

Consistently voted the world's most luxurious hotel, Burj Al Arab and its stunning hotel interior design is the icon of Dubai. With a height of 321 meters it is the tallest all-suite hotel in the world. Burj Al Arab is world's only skyscraper built on an artificial island, the building stands island on the Persian Gulf, 280 m from Jumeirah beach and is connected to the mainland by a private curving bridge. The building is specially built there in order to avoid its shadow covering the beach. There are six restaurants for guests to choose from, including Al Muntaha (The Ultimate) recognized as one of the finest restaurants globally and located 200 meters above the Persian Gulf, offering a breathtaking view. One of the iconic features of Burj Al Arab is that cantilevered platform near the roof, the platform is hovering at a height of 210 m above ground and is being used as a helipad. ACO contributed to the highest class service with custom designed line drainage solution of the helicopter landing pad as well with custom grease separation systems for the restaurant kitchens.

