

ACO ShowerDrain Stainless Steel Linear Drainage Channels

User Guide for Autodesk Revit files

The ACO ShowerDrain Range

ACO ShowerDrain range is divided into 3 main Product types, each with individual Revit Families.

- ACO ShowerDrain for Tiled Floors
- ACO ShowerDrain for Vinyl Floors
- ACO ShowerDrain C for high flow rate applications

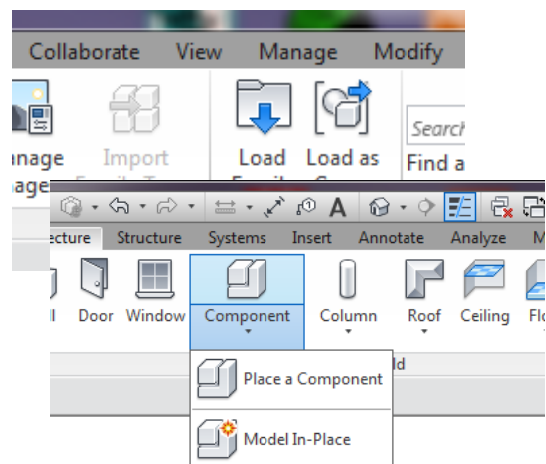


Each product range has options for grating styles and channel lengths.

Loading ACO ShowerDrain files into your project

Each system is modelled as a generic family that can simply be loaded into your project.

1. Download the relevant ACO ShowerDrain file and save it to a suitable location.
2. Open your project and navigate to an appropriate view.
3. Navigate to the “insert” icon on the Revit ribbon and click “Load Family”.
4. Select the ACO ShowerDrain file you saved earlier.
5. The file can now be placed into your project. Navigate to the “Architecture / Component” icons on the Revit ribbon and click “Place a Component”



Note that all the ACO ShowerDrain files are “floor” based items.

ACO Building Drainage

A Division of ACO Technologies plc

ACO Building Drainage
ACO Business Centre
Caxton Road
Bedford
MK41 0LF

Tel: 01462 816666
Fax: 01462 851490

email: abdtechnical@aco.co.uk
Website: www.acobd.co.uk

Using the ACO ShowerDrain Stainless Linear Drainage

Step 1: Select the applicable channel based on floor finish.

Shower channel system for tiled flooring:

There are 7 grating styles to choose from; and each style is available in 5 lengths (700mm to 1200mm). Each channel family is complete with a Foul Air Trap with a 50mm water seal. The flow rate for these products is 0.4 litres / second.

Shower channel system for flexible sheet flooring:

There are 4 grating styles to choose from; and each style is available in 5 lengths (700mm to 1200mm). Each channel family is complete with a Foul Air Trap with a 50mm water seal. The flow rate for these products is 0.4 litres / second.

ACO ShowerDrain C channels:

There are 5 grating styles to choose from; and each style is available in 7 lengths (585mm to 1185mm). Each channel family is complete with integrated foul air trap with a 50mm water seal. The flow rate for these products is 0.95 litres / second.

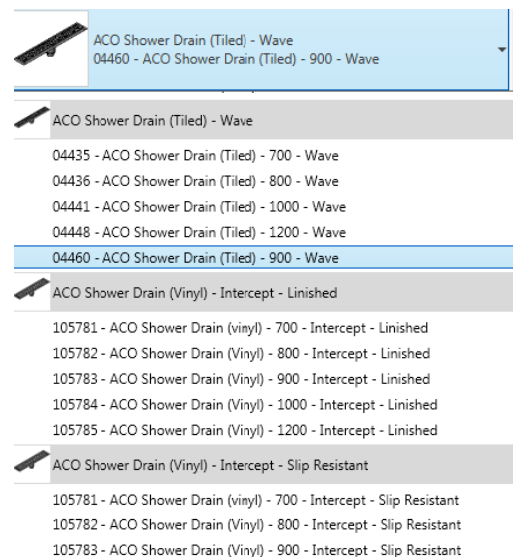
Step 2: Select the Grate Style

Each product type has a number of options for grate style. Once the family is loaded into your template, you can choose the length required.

Step 3: Select the Channel Length

Depending on the floor finish category of channel; there are a number of pre-set lengths for each grate style.

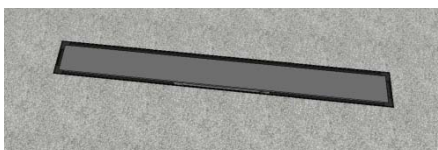
Please note there is **NO** option for non-standard lengths.



Materials & Rendering:

The ACO ShowerDrain products have been created to allow for the production of accurate rendered images. The material finishes are pre-defined in the type properties of the Revit family.

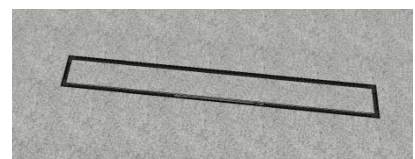
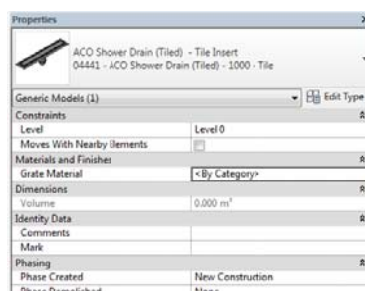
The only exception is the Tile Infill grate: Here there is an option to use the same floor material in the grate to represent the tile infill. This should be set to match the surface material of the floor.



ACO Building Drainage

A Division of ACO Technologies plc

ACO Building Drainage
ACO Business Centre
Caxton Road
Bedford
MK41 0LF



Tel: 01462 816666
Fax: 01462 851490

email: abdtechnical@aco.co.uk
Website: www.acobd.co.uk

Using the material specifications incorporated within the family, the ShowerDrain components can be used to create realistic renders of items in work.

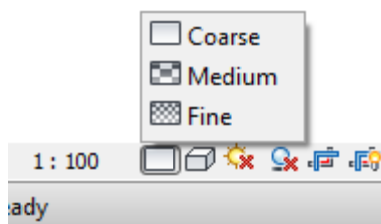


Manipulation:

The family components can simply be placed and arranged using the standard Revit “modify” tools of Move, Copy, Rotate and Align.

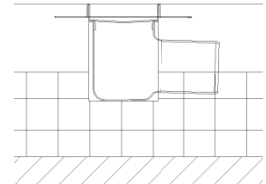
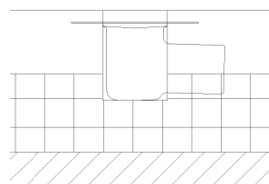
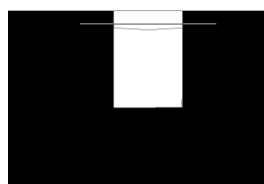
Sectional Accuracy

ACO ShowerDrain family components are designed with varying levels of detail, which can be accessed via the Revit “Detail Level” function.



A Division of ACO Technologies plc

ACO Building Drainage
ACO Business Centre
Caxton Road
Bedford
MK41 0LF



Tel: 01462 816666
Fax: 01462 851490

email: abdtechnical@aco.co.uk
Website: www.acobd.co.uk

Type Properties

The ACO ShowerDrain file has a collection of useful information embedded with it, including site installation and operations and maintenance details.

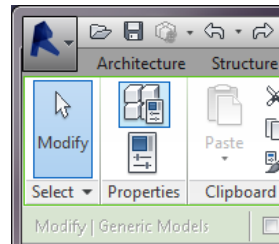
This information, along with much more is stored within the files or available through hyperlinks within the component type properties.

1. To access the information within a component, simply select the item and click the “Type Properties” icon on the Revit ribbon at the top of the dialogue.
2. The “Type Properties” information screen will now display. Simply scroll up and down the screen to find the information you require.

Materials Library & Notes

The ACO ShowerDrain Range contains materials that are already pre-loaded into the components. The files can be pre-loaded into you company template.

ACO ShowerDrain families have been created in Revit 2014



ACO Building Drainage

A Division of ACO Technologies plc

ACO Building Drainage
ACO Business Centre
Caxton Road
Bedford
MK41 0LF

Tel: 01462 816666
Fax: 01462 851490

email: abdtechnical@aco.co.uk
Website: www.acobd.co.uk